

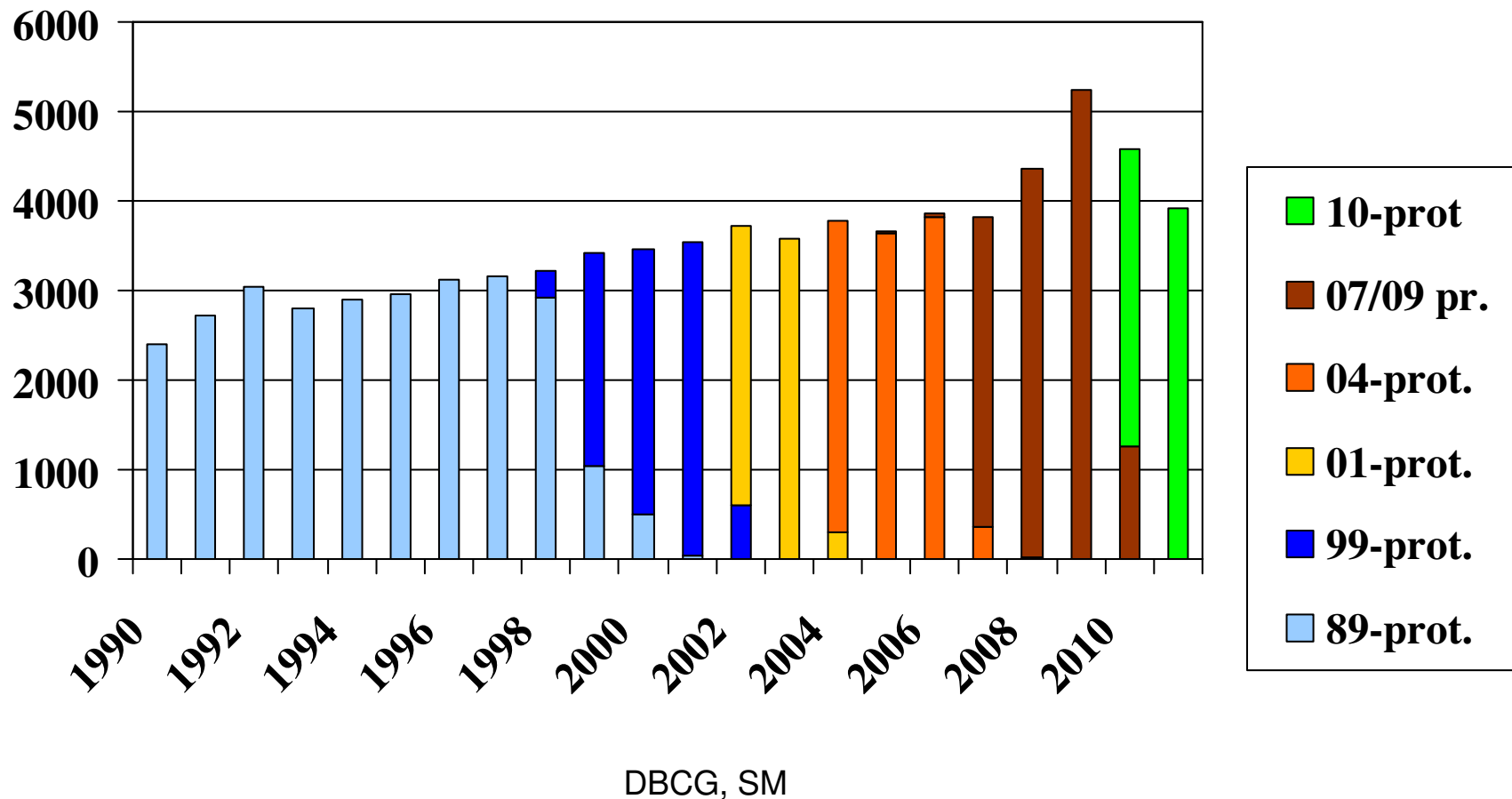
# Repræsentantskabsmøde

## 16-1-2012

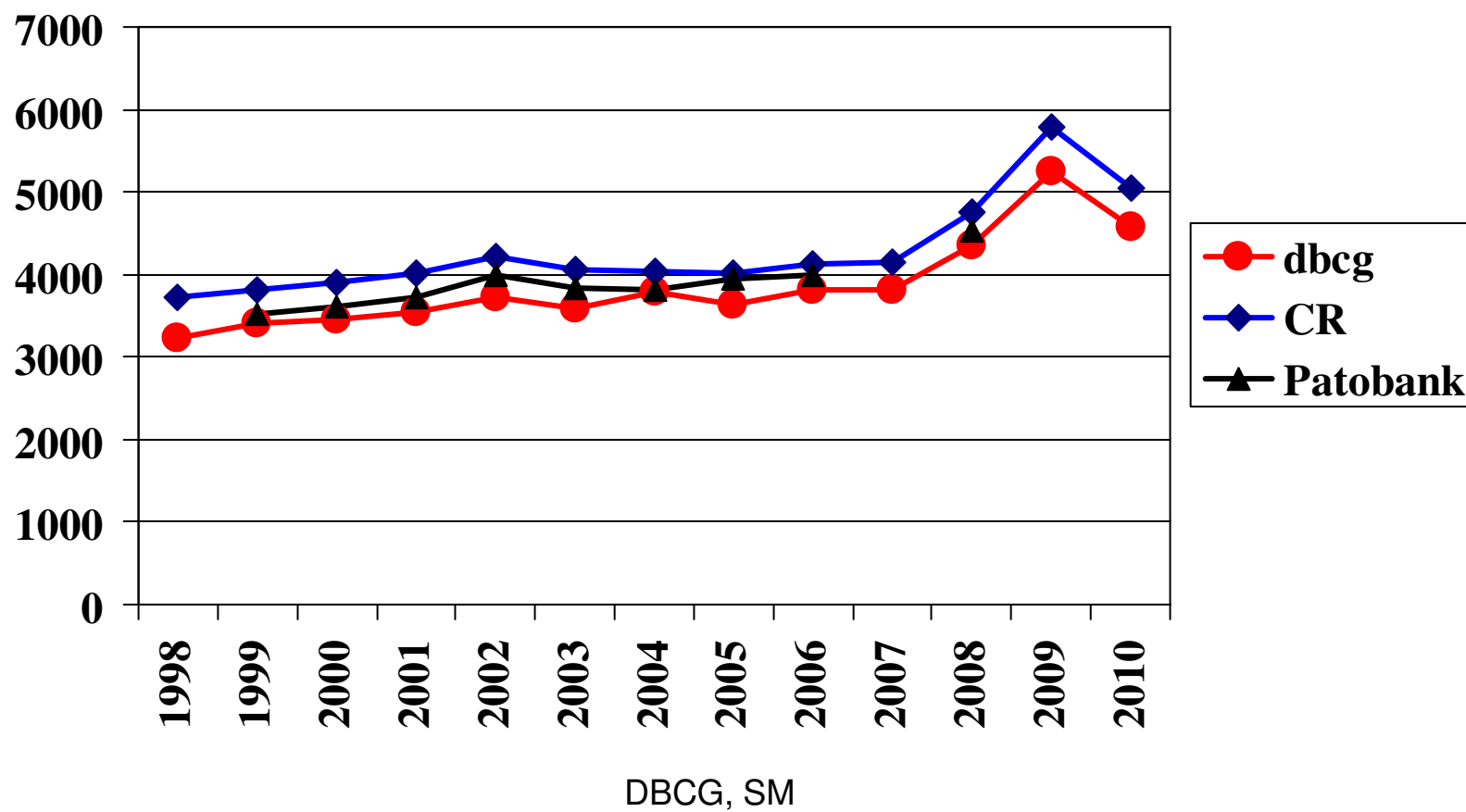
Susanne Møller  
DBCG

# Antal i DBCG 89/99/01/04/07/09/10

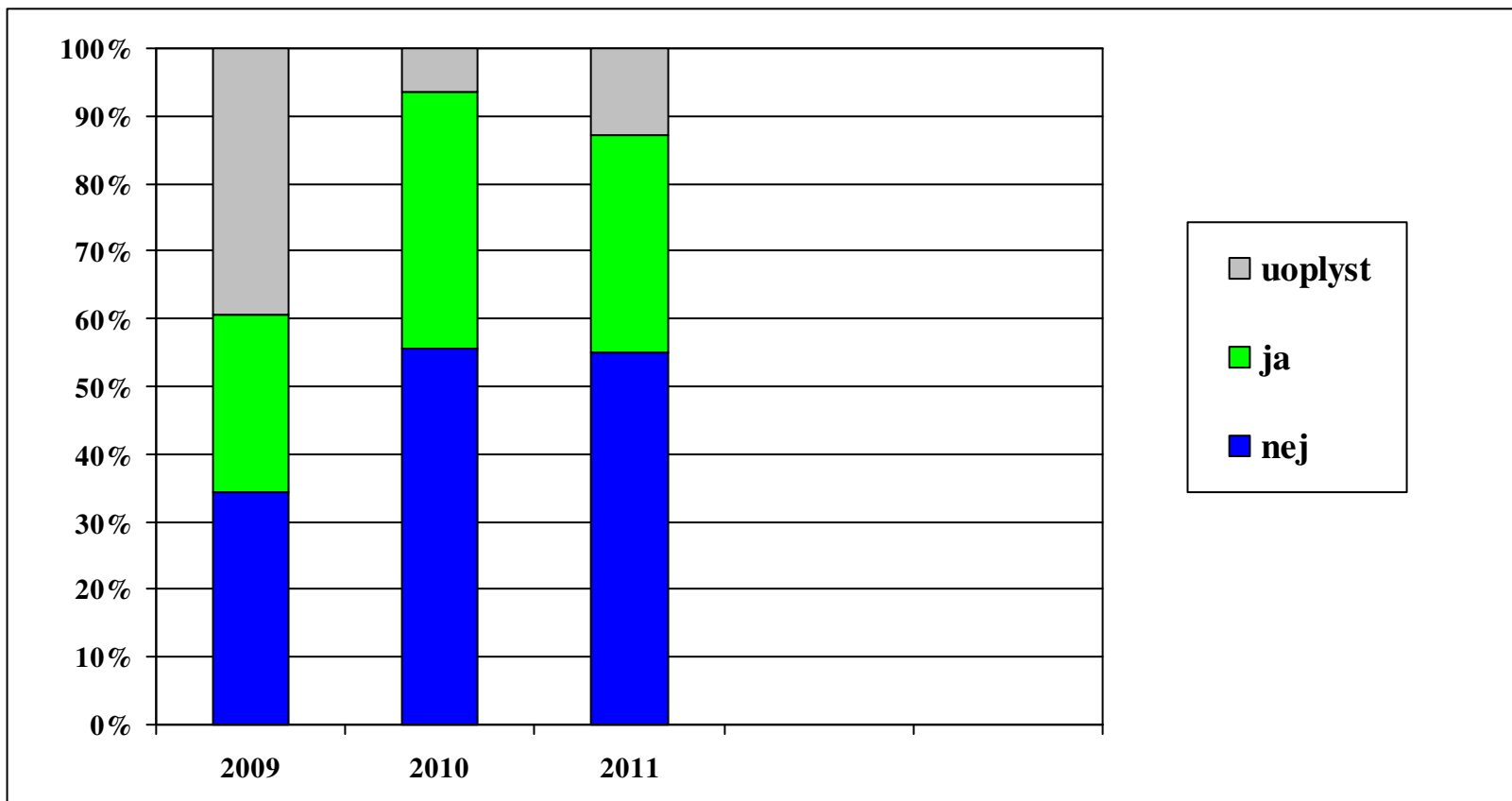
(n=77.598, i hele databasen: n= 104.513 )



# Antal registreringer af pt. med primær invasiv cancer i DBCG vs CR vs Patobank

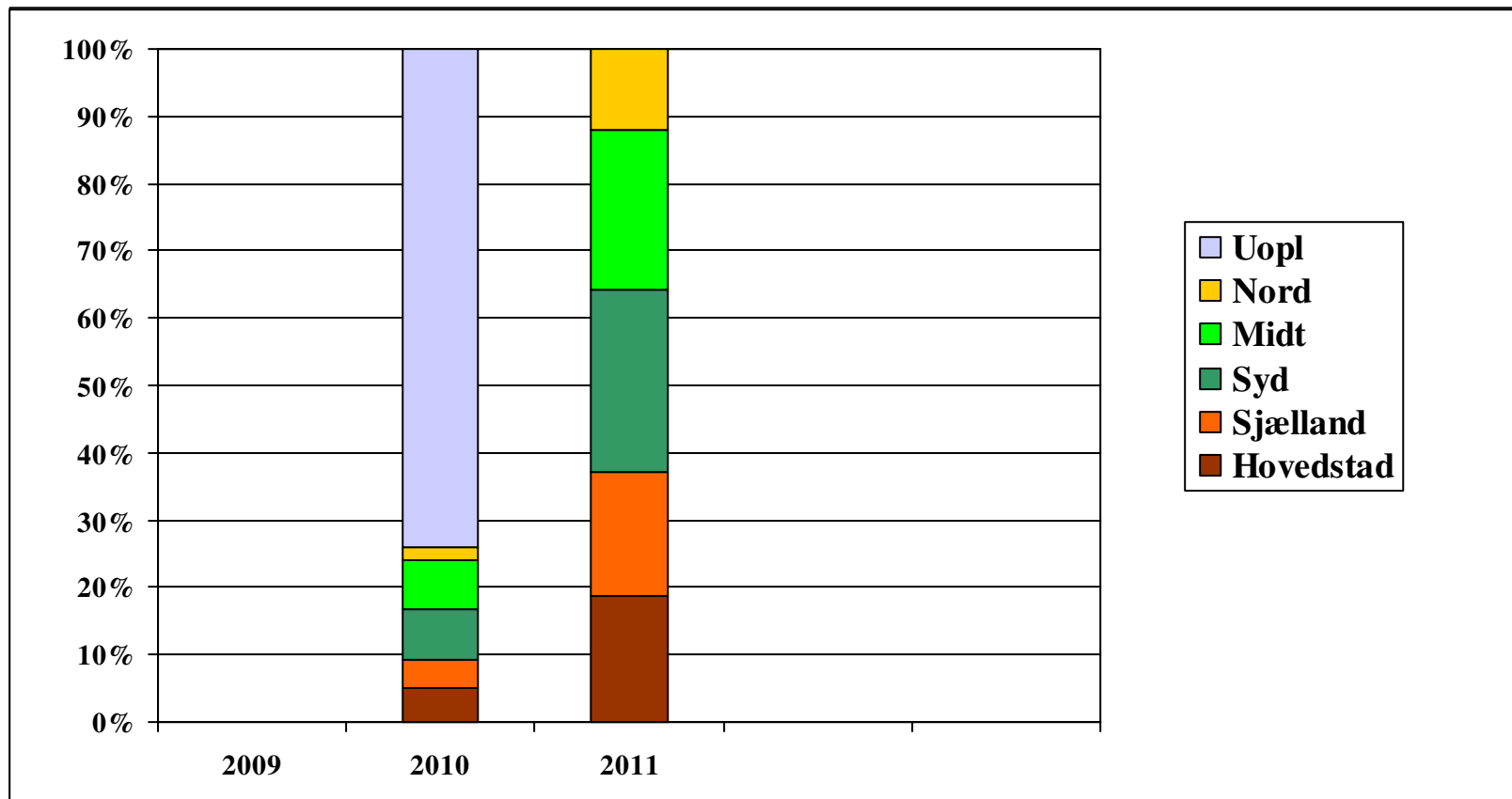


# Fundet ved populationsscreening



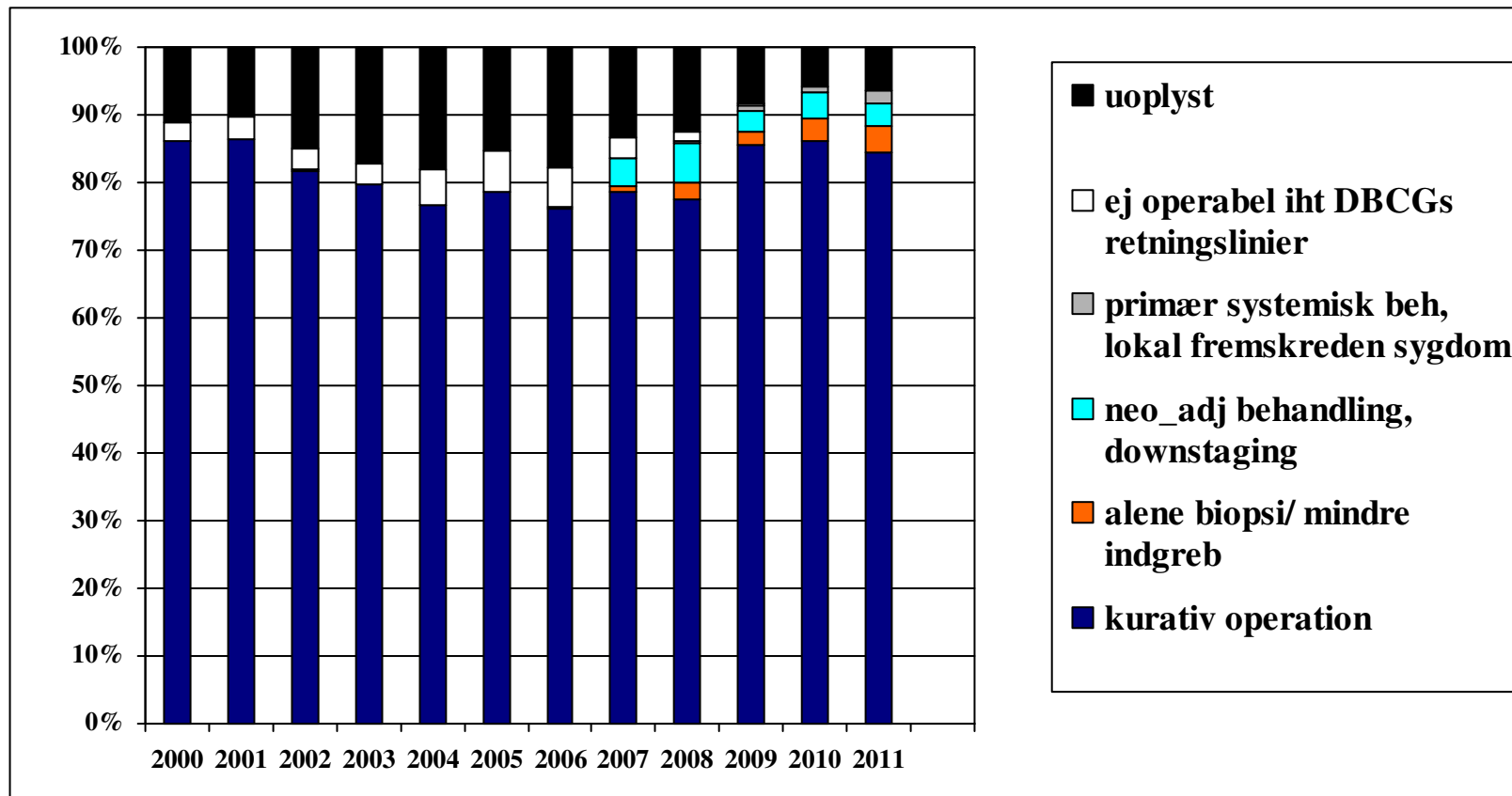
DBCg, SM

# Screeningsregion



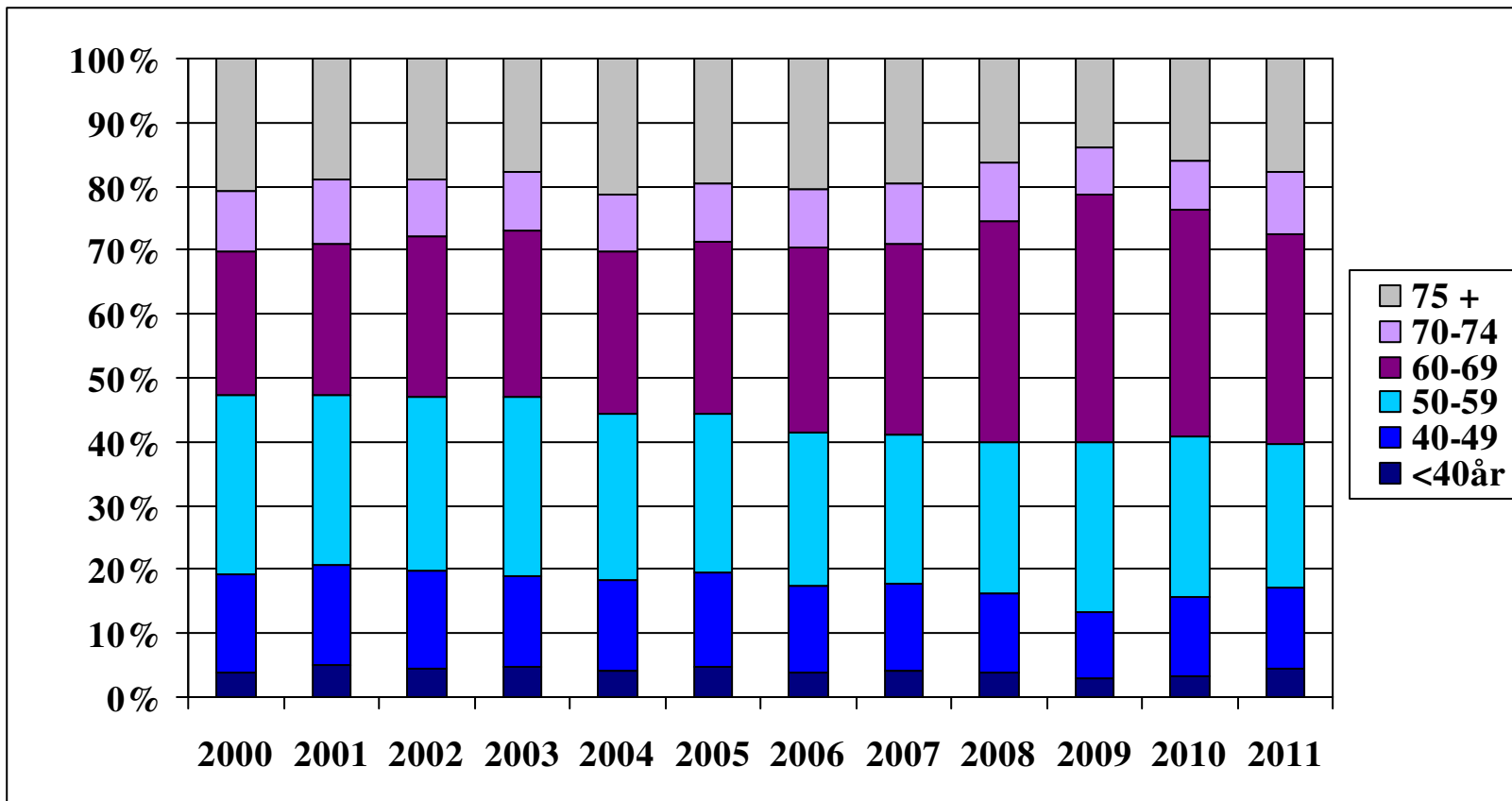
DBCg, SM

# Fordeling af præoperativ klassifikation



DBCG, SM

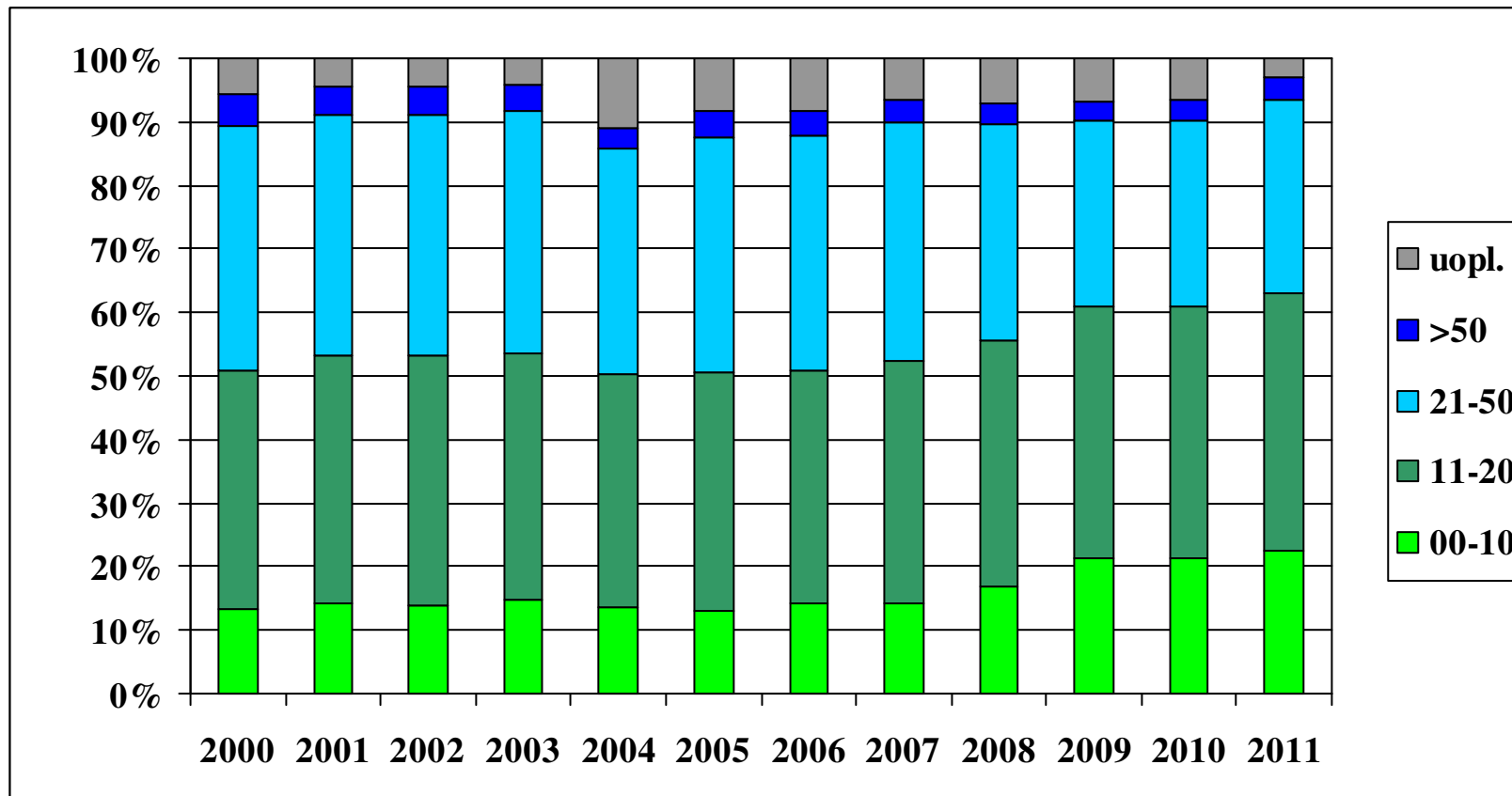
# Fordeling af alder pr år



DBCg, SM

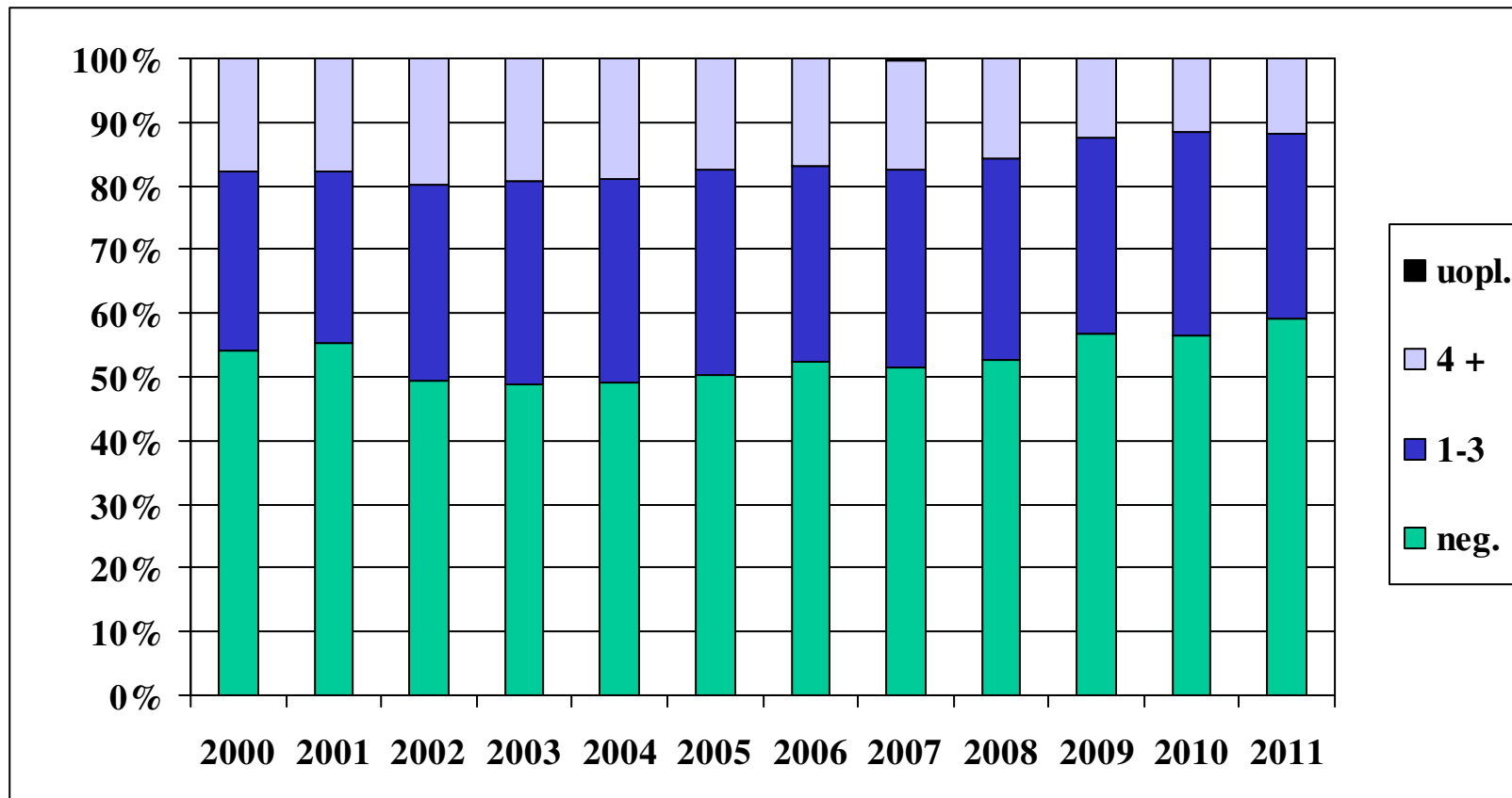
# Fordeling af tumorstørrelse pr år

(største diameter i mm- ny inddeling)



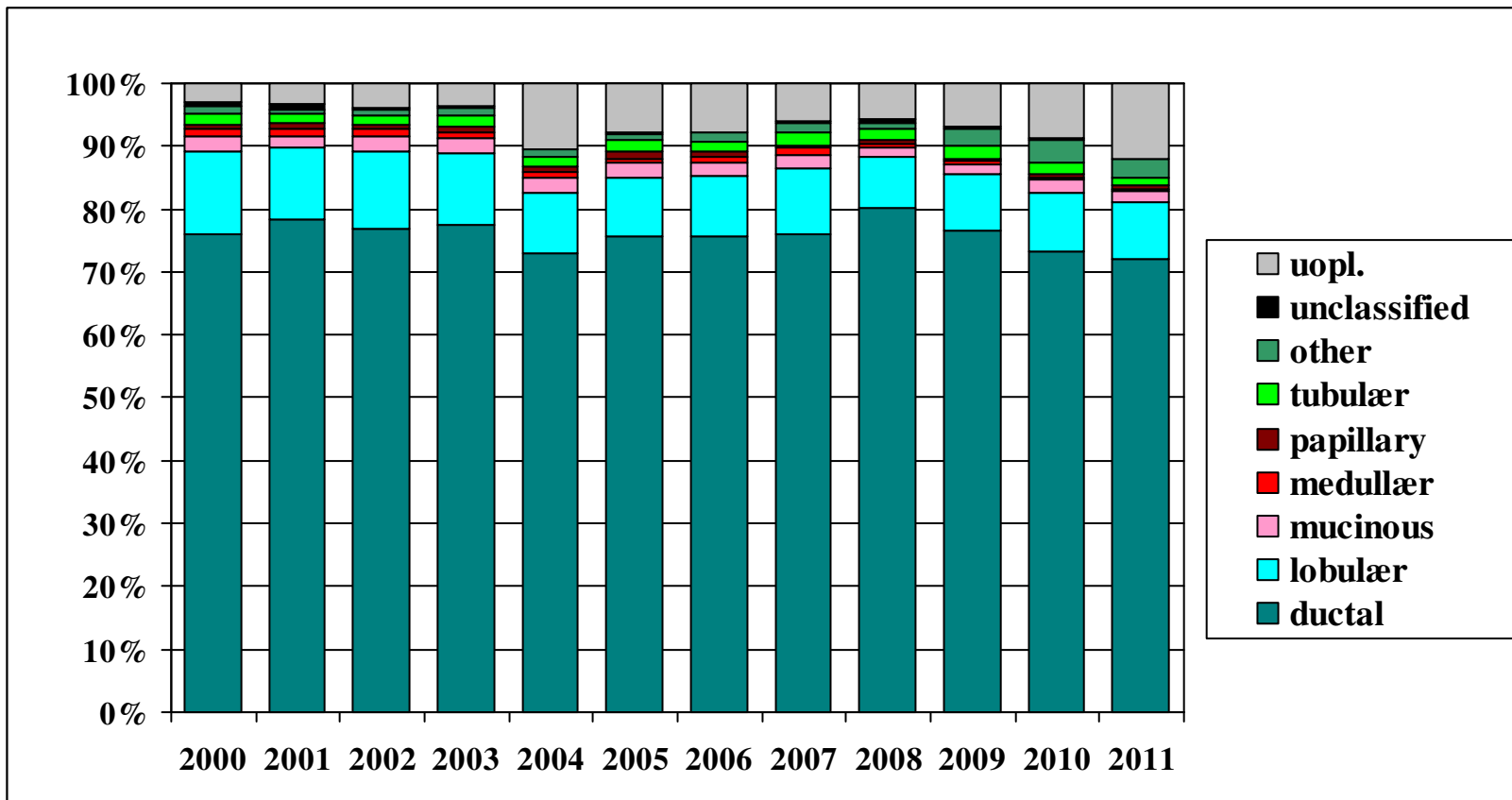


# Antal positive lymfeknuder pr år



DBCg, SM

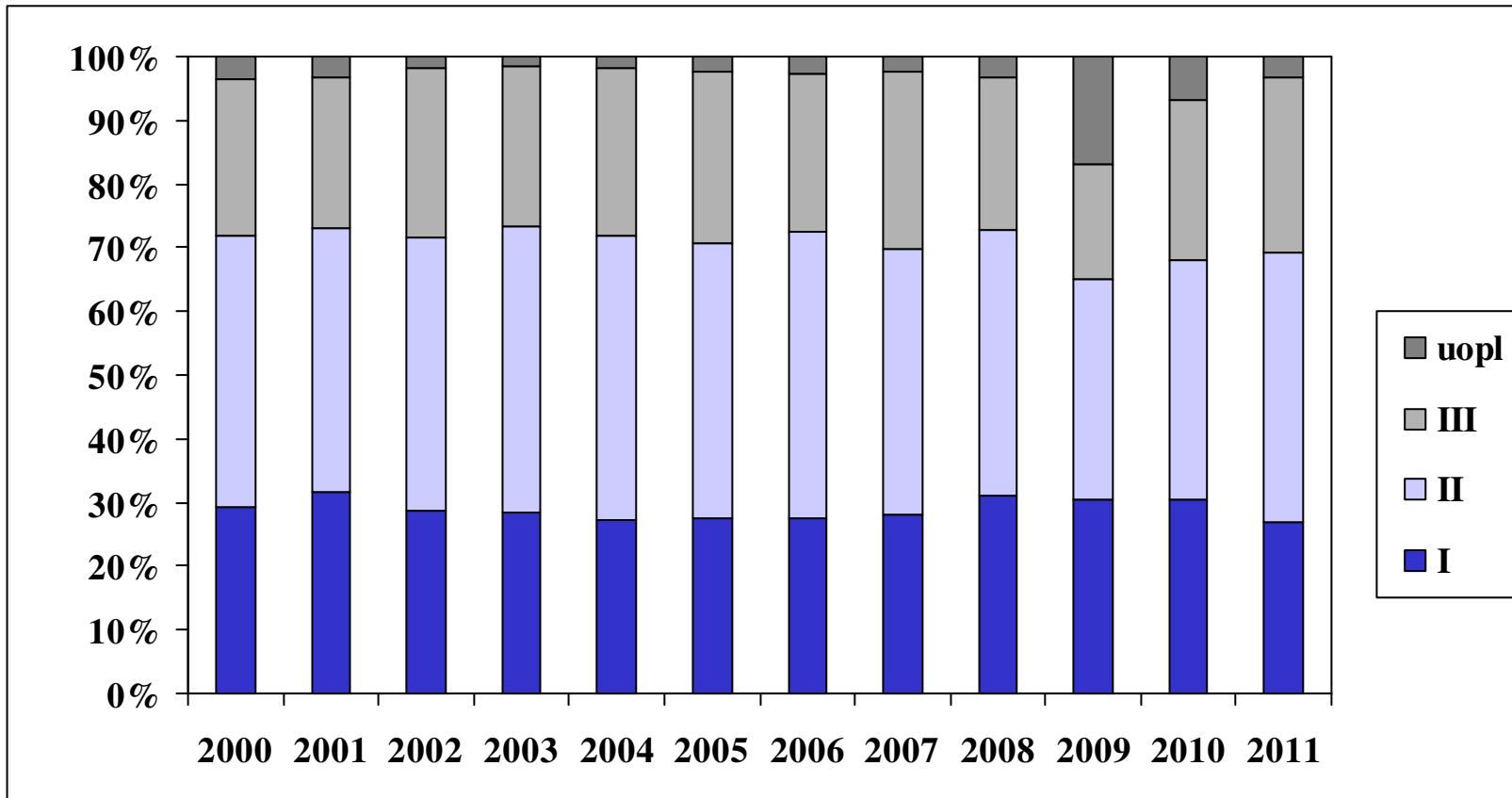
# Fordeling af diagnosetype pr år



DBCG, SM

# Malignitetsgrad 1-3 pr år

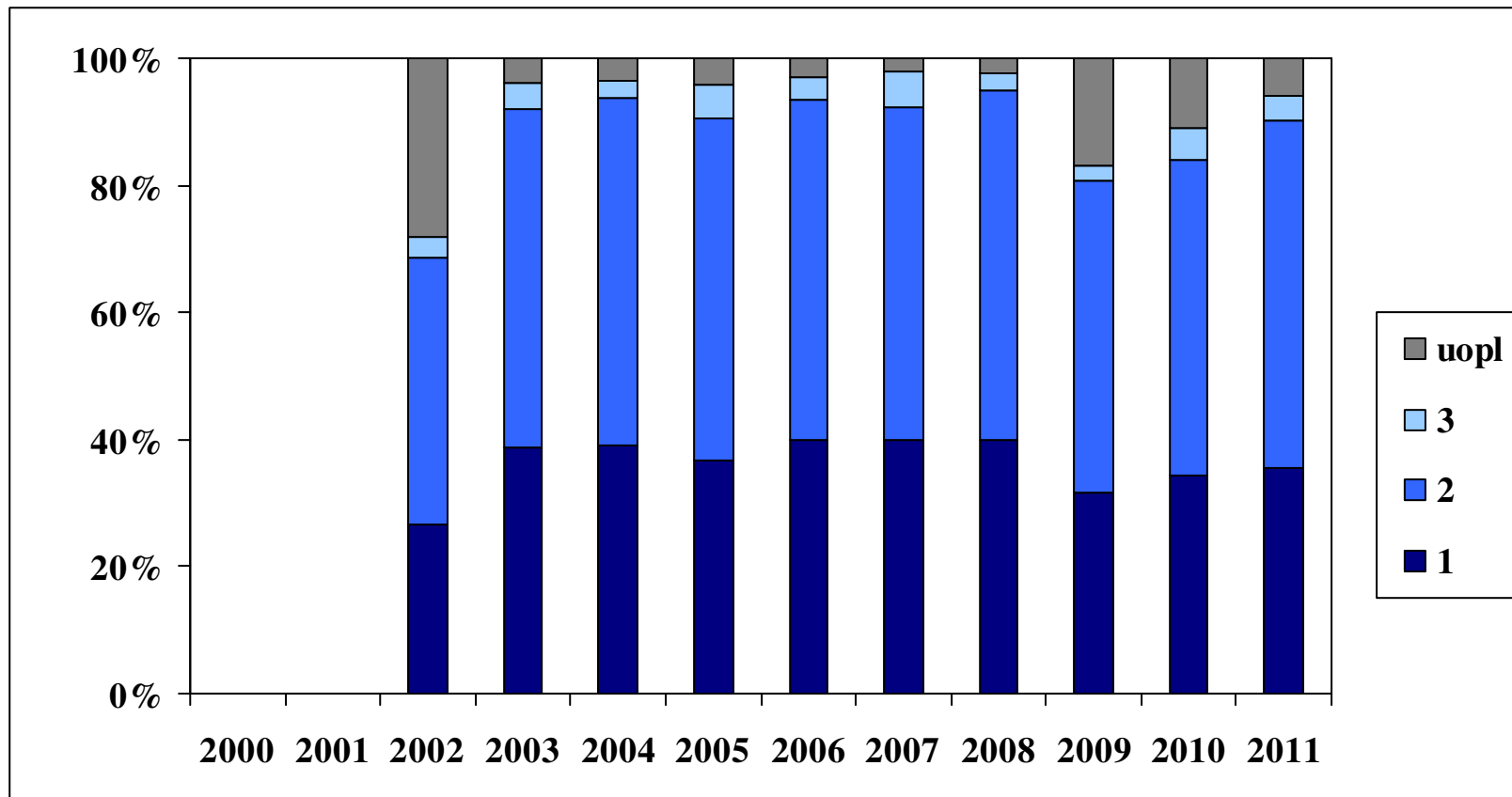
(ductal tumor 2000-2011: n=35.060)



DBCG, SM

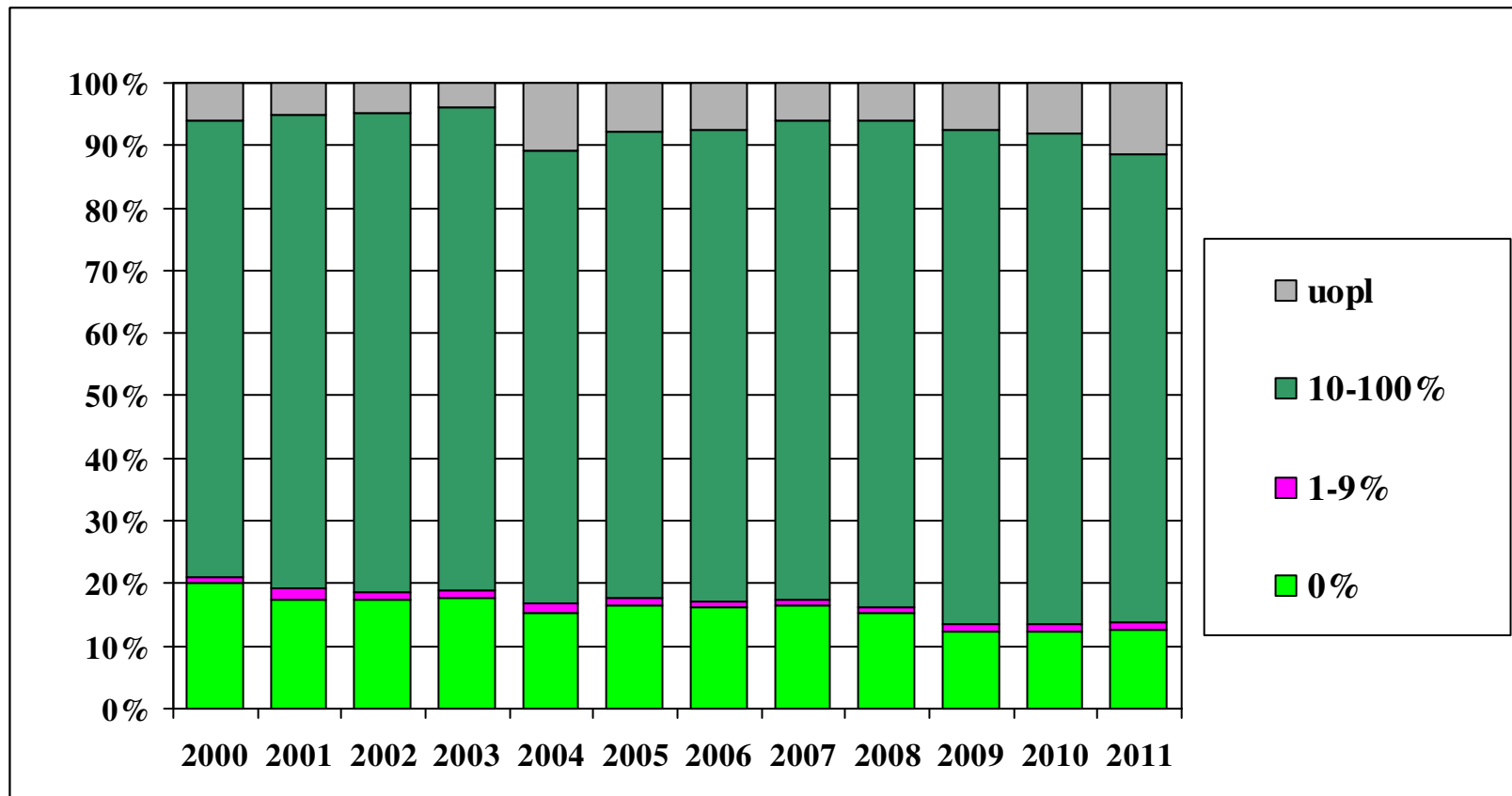
# Malignitetsgrad 1-3 pr år

(lobulær tumor 2000-2011: n=4.821)



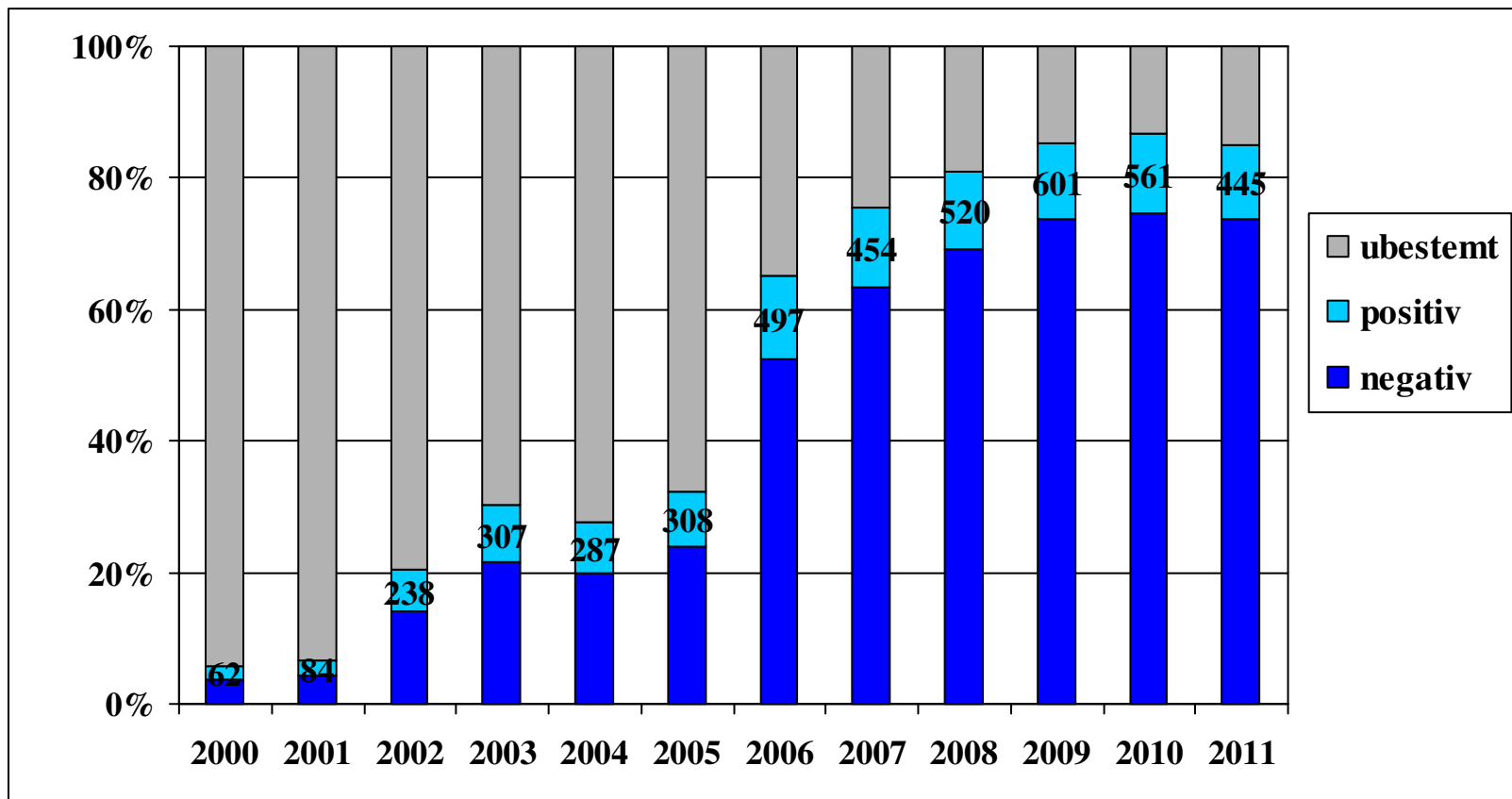
DBCG, SM

# ER status



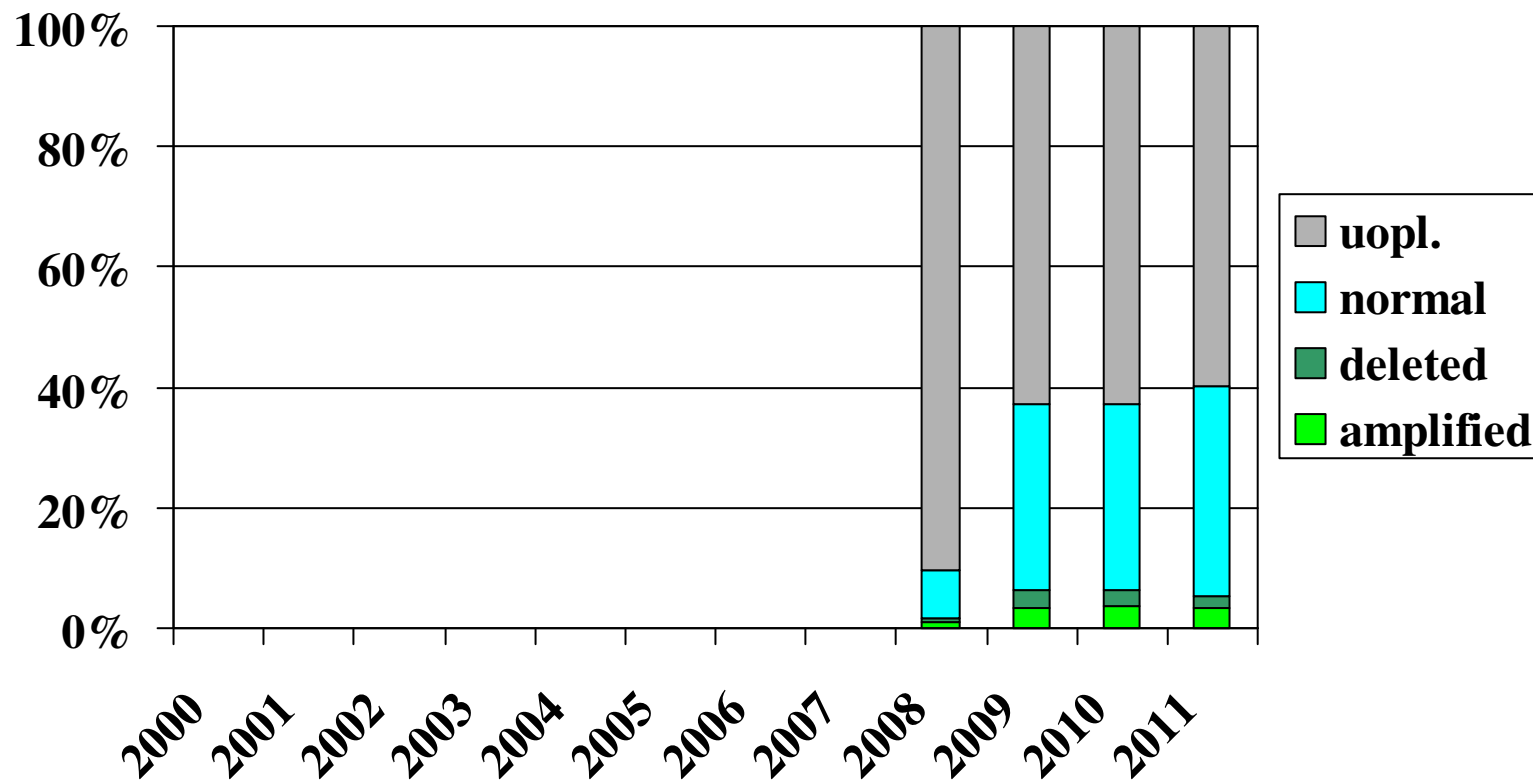
DBCG, SM

# HER2 status



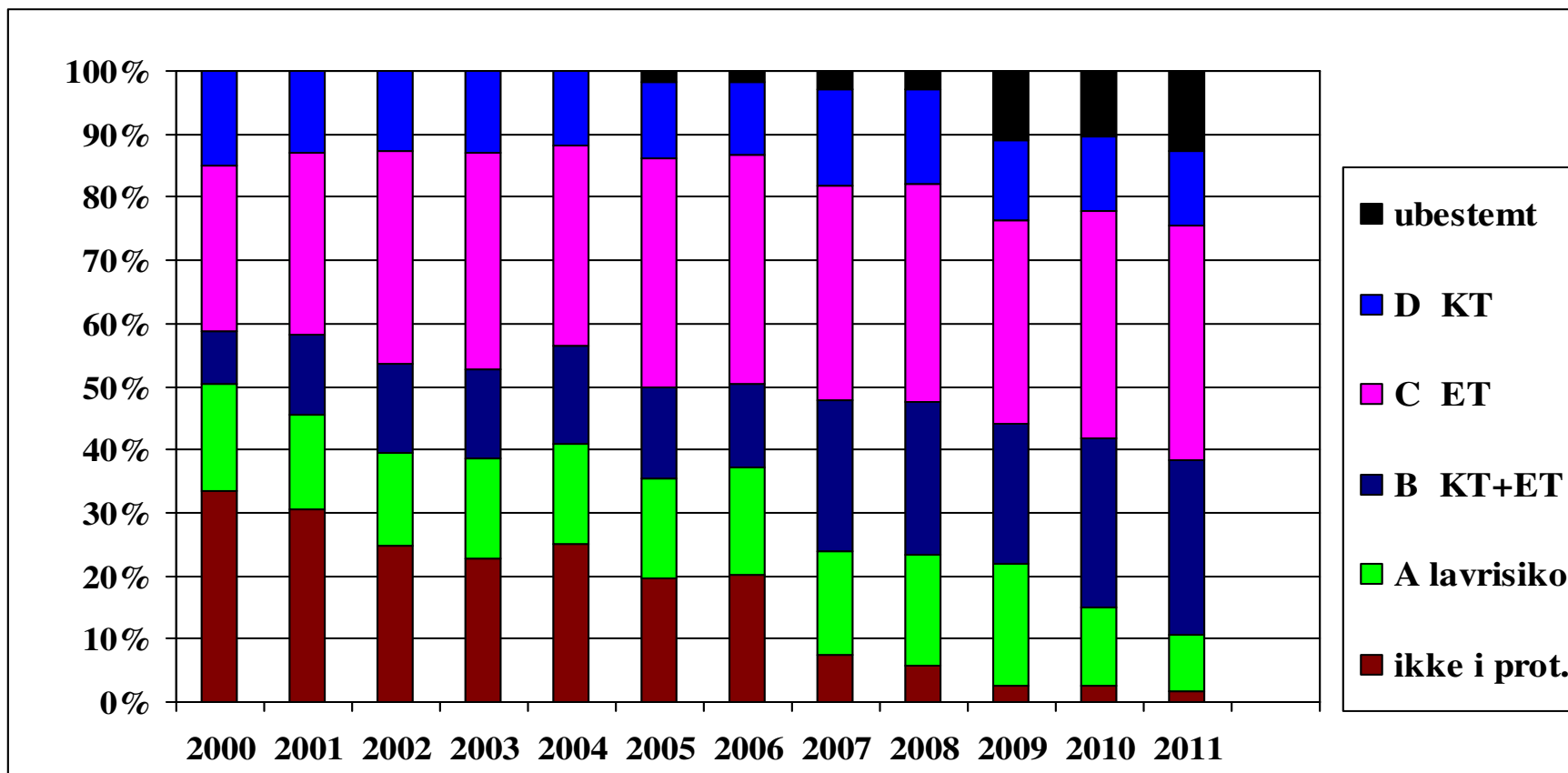
DBCG, SM

# TOP2A bestemmelser



DBCg, SM

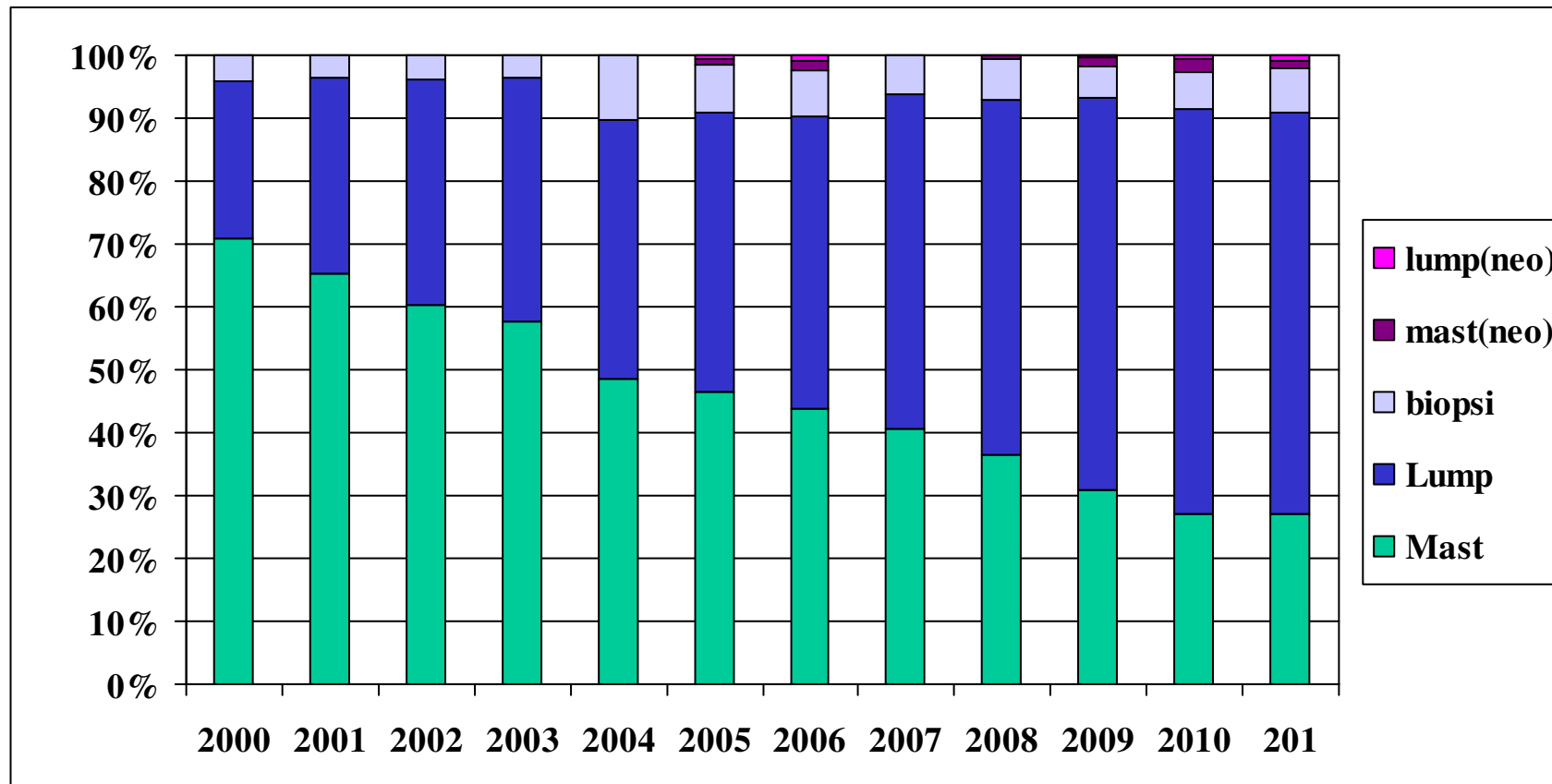
# Fordeling på protokol



DBC, SM

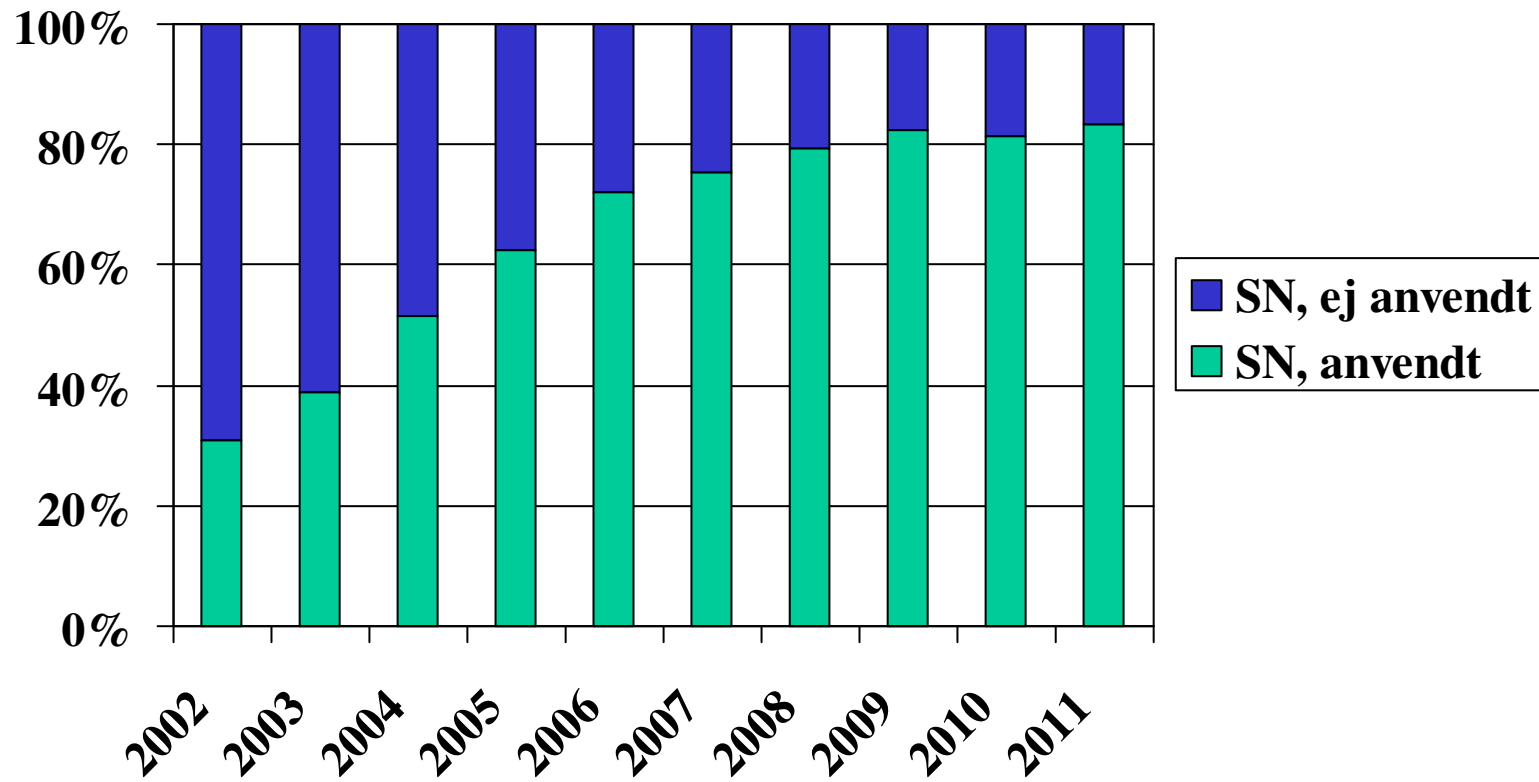


# Fordeling af operationstype pr år



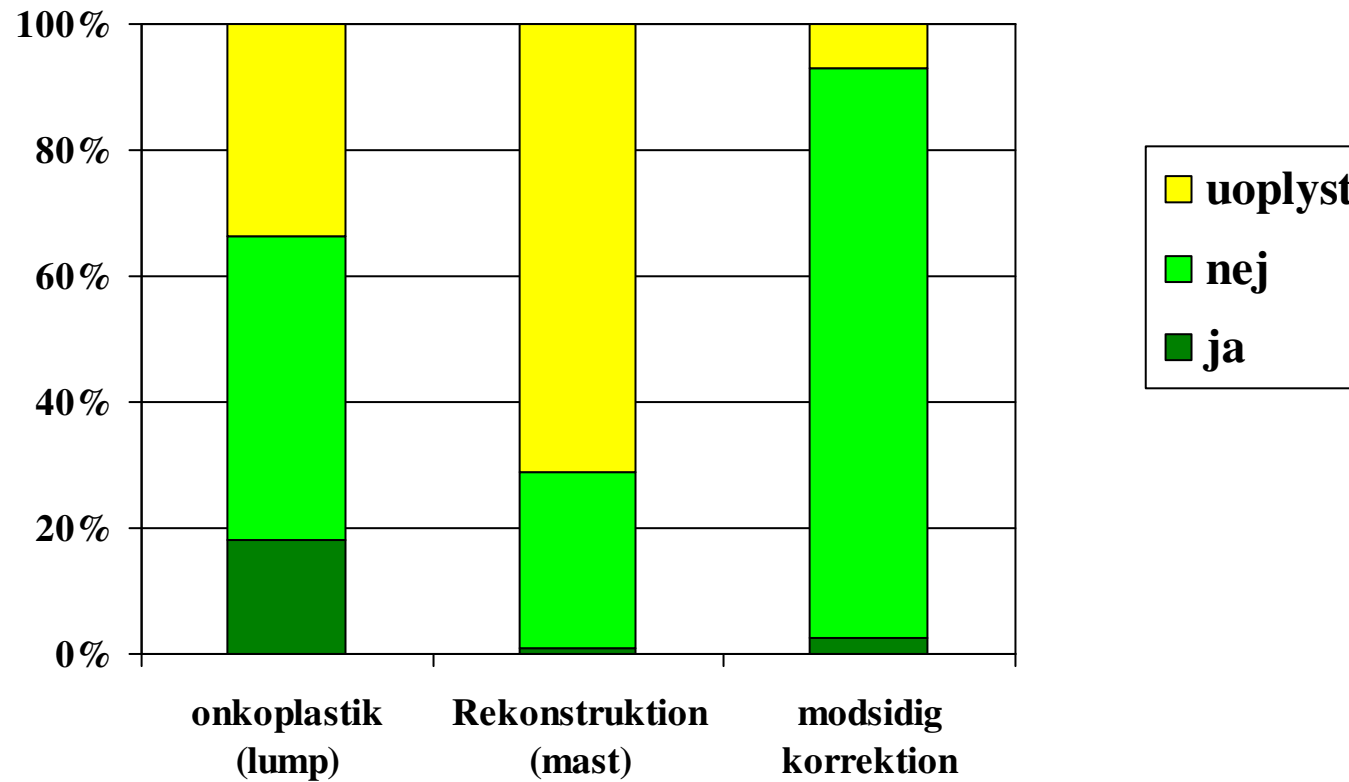
DBCG, SM

# Sentinel Node (Node -/+)



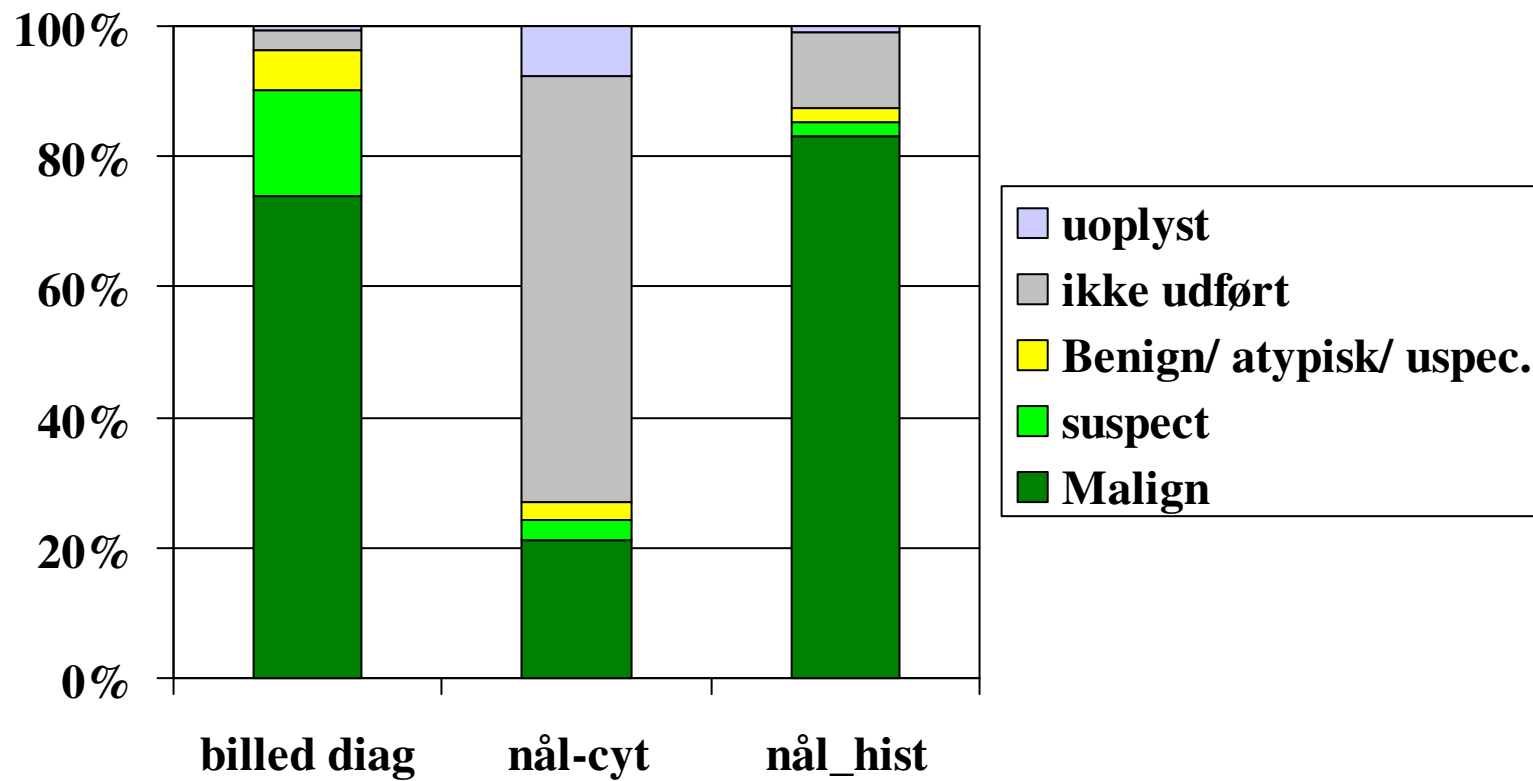
DBC, SM

# Onkoplastik 2011



DBCg, SM

# Diagnostik 2011



# Fordeling på standard behandling i 2011

Protokol	Kriterier 2011	Medicinsk efterbeh.	Antal (n=3924)
Ikke i protokol			71 (1.8.%)
A lavrisiko	>=50 år N-, tumor<=1 cm (duktal, I or lobulær I-II eller Anden diag) R+/? , HER2 -/? , Top2A norm/?	Ingen	352 (9.%)
B,(t) højrisko	ER : 1-9% eller ER>=10% Og komb (alder, tumor)samt andre risikofaktorer eller >= 60 år Her2+	KT, ET, ( T)	1080 (28%)
C højrisko	ER >=10% Og komb (alder, tumor), ingen øvrige risk	ET	1464 (37%)
D,(t) højrisko	ER: 0%	KT, (T)	465 (12%)

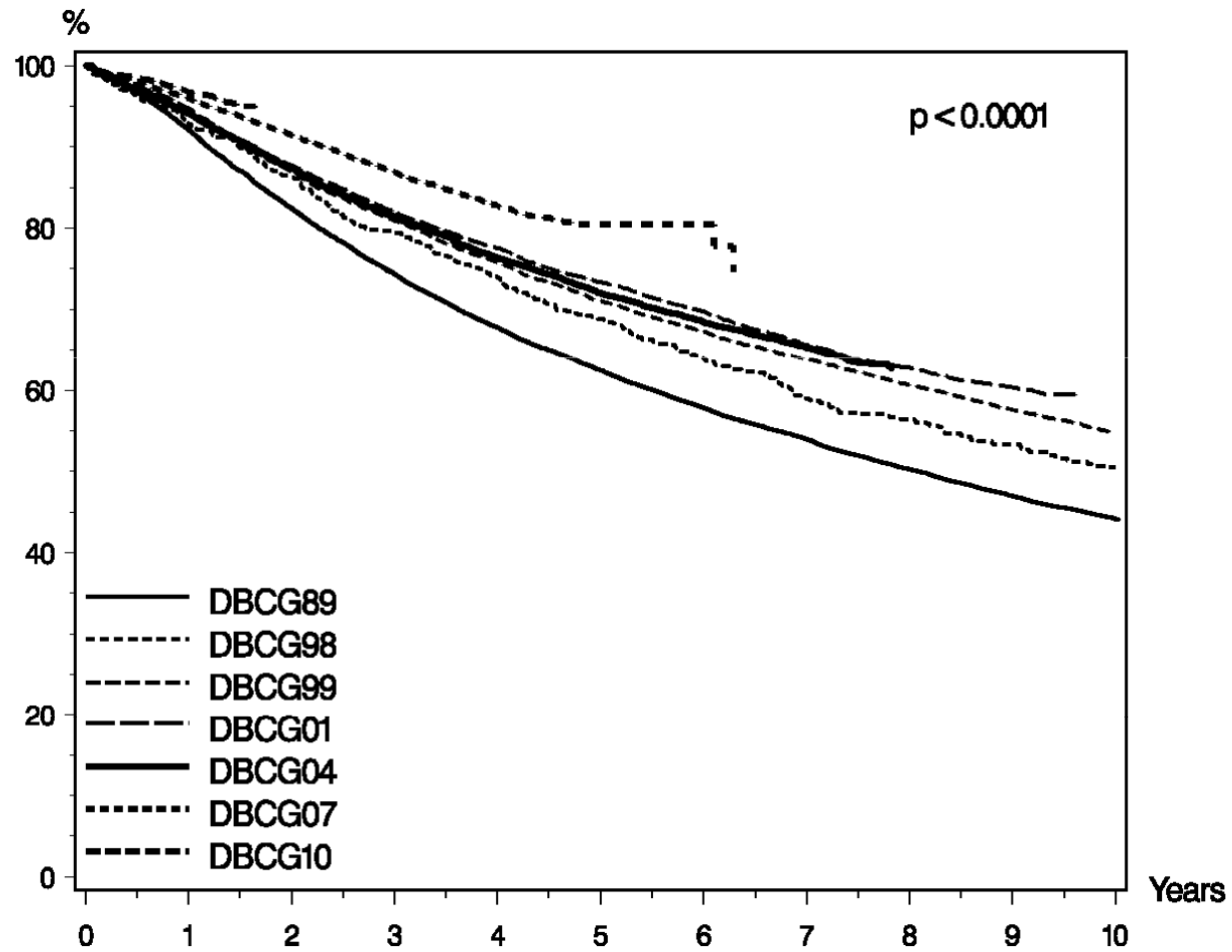
# Randomiserede protokoller i 2011

Protokol	Regime	2007-2008 antal	2009 antal	2010 antal	2011 antal
READ start juli 08	1 EC→ Docetaxel 2 Docetaxel+ Cyklofosfamid	62	471	561	506
REAL start juli 09	Operation -> letrozol Neo_adj 4 uger -> operation		15	40	48
RT 09 HYPO Stråle beh Start sept 09			95	155	434
RT 09 PBI Stråle beh Start sept 09			43	95	154
SOLE Start nov 09	Fortsat letrozole efter 5 år Continuert vs intermitterende		14	164	143

# Årsager til ikke protokol i 2011

Årsag	Antal			
	2011	2010	2009	(2008)
<b>Fjernmetastaser</b>	<b>40</b>	<b>42</b>	<b>50</b>	<b>(59)</b>
Tidl.malign	26	90	91	(77)
<b>Sarkom/phylloides</b>	<b>0</b>	<b>2</b>	<b>3</b>	<b>(4)</b>
Bilateral	34	73	97	(103)
Kontraindikation (f.eks. Alder)	26	34	61	(109)
Teknisk inoperabel	1	41	40	(79)
Ikke opereret ifølge dbcg	0	60	157	(303)
<b>Andet</b>	<b>29</b>	<b>56</b>	<b>69</b>	<b>(142)</b>

## DFS by protokol

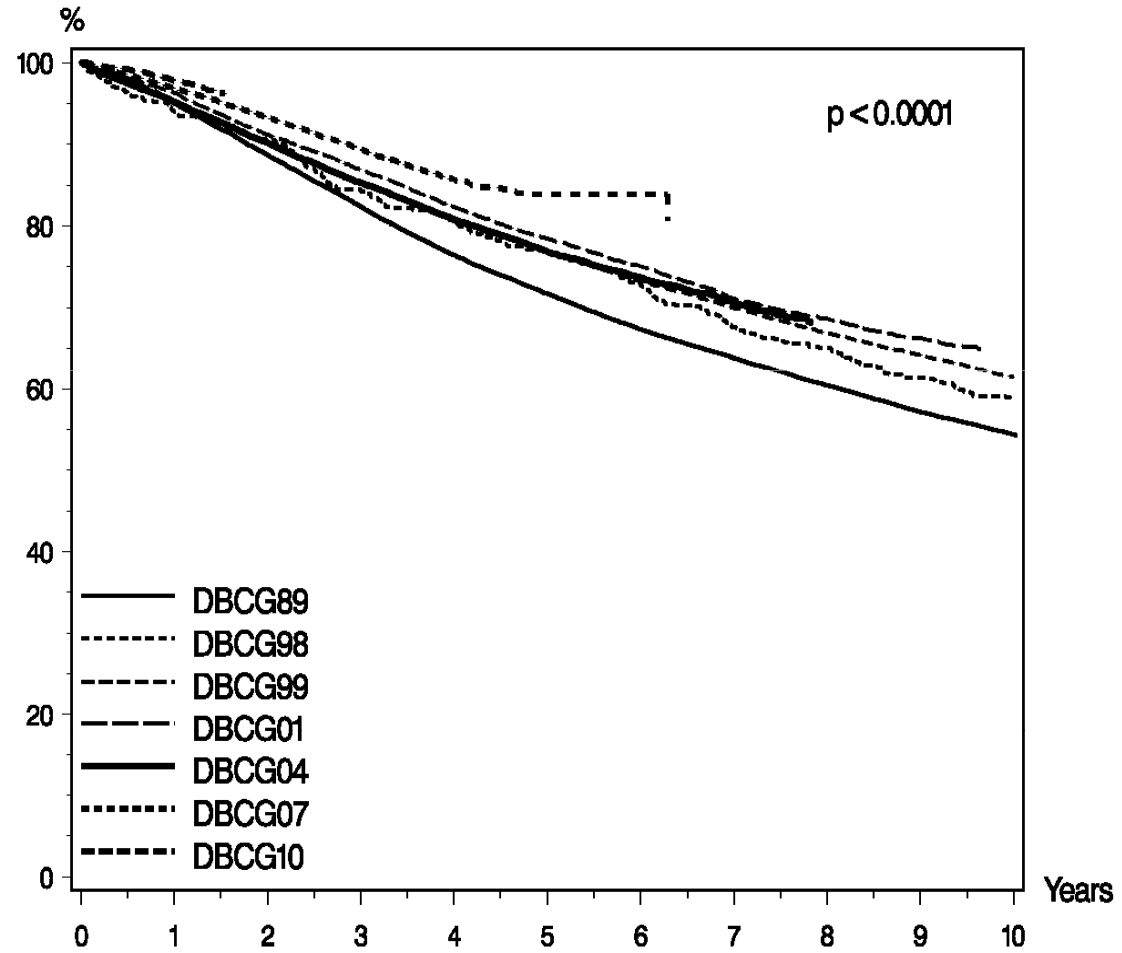


Patients at risk:

DBCG89	27632	23148	20060	17683	15794	13971	12479	11189	10071	7587
DBCG08	578	512	455	420	381	342	315	280	267	207



# OS by protokol



Patients at risk:

DBCG89	27635	26007	24043	22097	20452	19059	17888	16807	15811	14949
DBCG98	578	540	515	474	450	430	400	375	351	335

# Databasens tilstand

- Protokol kan ikke bestemmes (ca 3100)
  - Mangler kirurgi (dato for operation)
  - Mangler patologi (diagnose, prognostiske faktorer)

# Databasens tilstand

## manglende data, patologi og kirurgi

Kir Pat	antal	Neo adj	Biopsi alene	Rand	Flow reg
- +	920	95	-	88	310
+ -	1042	162	420	40	207
- -	660	114	-	132	255
+ +	471	17	44	120	281
sum	3103	379	464	380	1053

# Databasens tilstand

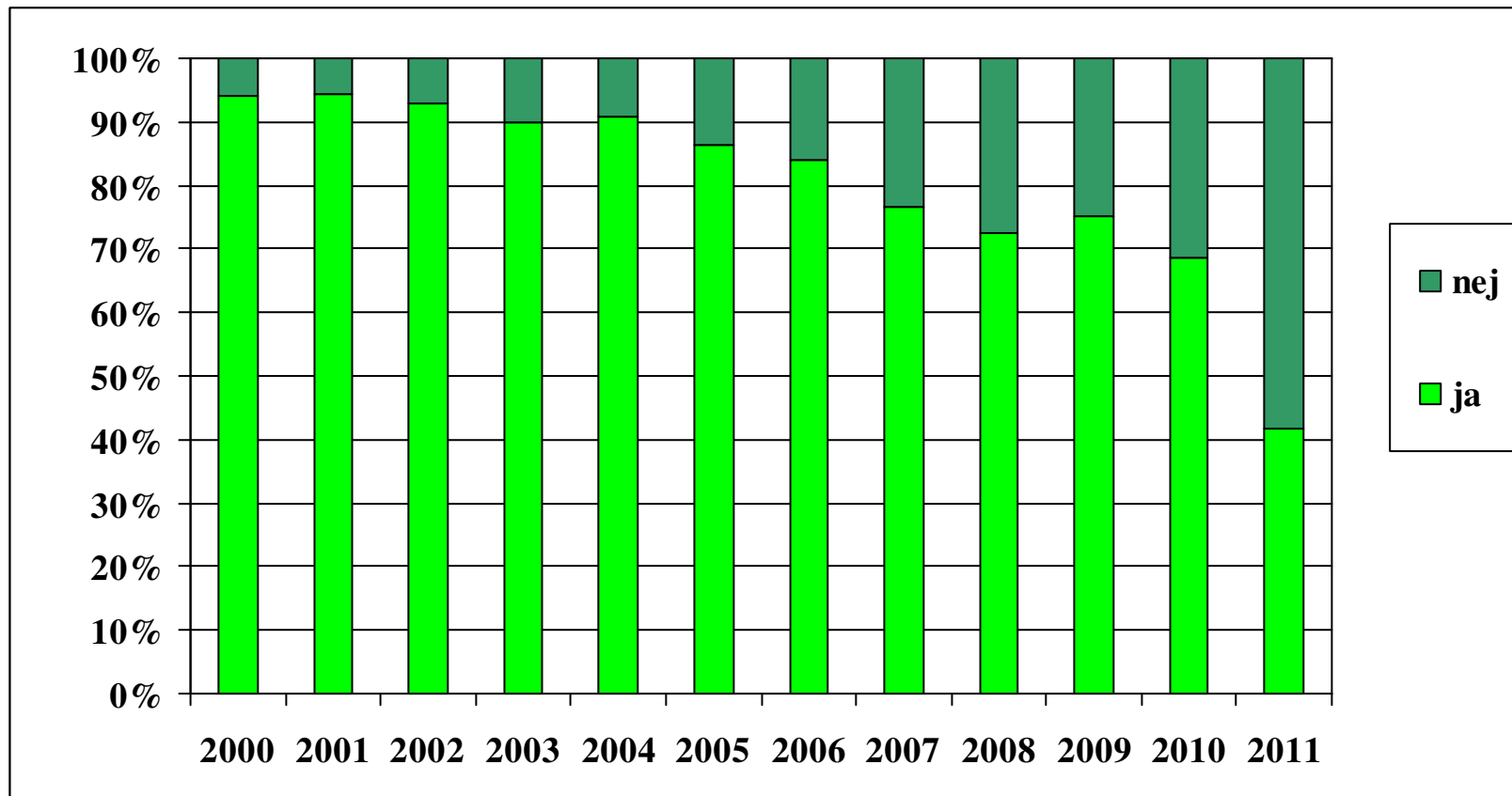
- Protokol kan ikke bestemmes (ca 3100)
- Manglende indtastning
- Fejlindtastninger:
  - Taster kirurgi, men diagnosen verificeres ikke
  - Taster kontrol for DCIS-patient i invasiv (650)
  - Taster offstudy for DCIS-patient i invasiv (200)

# Databasens tilstand

- Flowindberetninger for behandling
- (2000-2011)

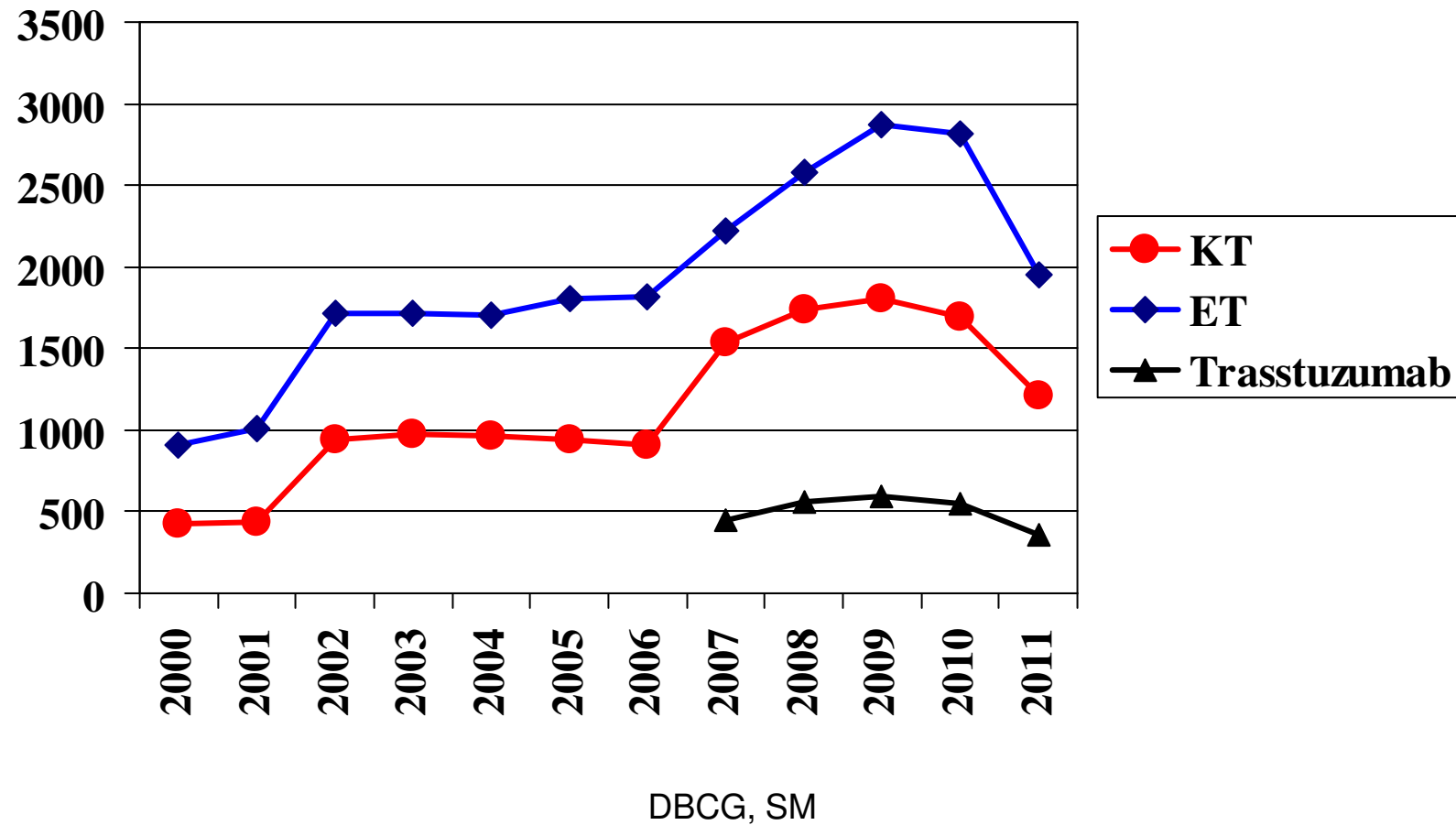
– DBCG B	(KT +ET)	84%
– DBCG C	(ET)	78%
– DBCG D	(KT)	70%

# Indberettede behandlings flow for højriskopatienter



DBCg, SM

# Behandling ifølge DBCGs retningslinier



## Databasens tilstand indberetning af forventet behandling

Forventet beh	ja	Nej	Uopl.
KT	73 %	5 %	22 %
ET	77 %	3 %	20 %
Trastuzumab	30 %	32 %	38 %



# Databasens tilstand

- Flowindberetninger for behandling
  - Manglende indberetninger
  - Manglende afkrydsning på mammaskema mht 'bemærkninger ang indberetning af flowsheet' (Årsag til ikke protokol)
  - Manglende Off-study

# SLUT

DBCG, SM