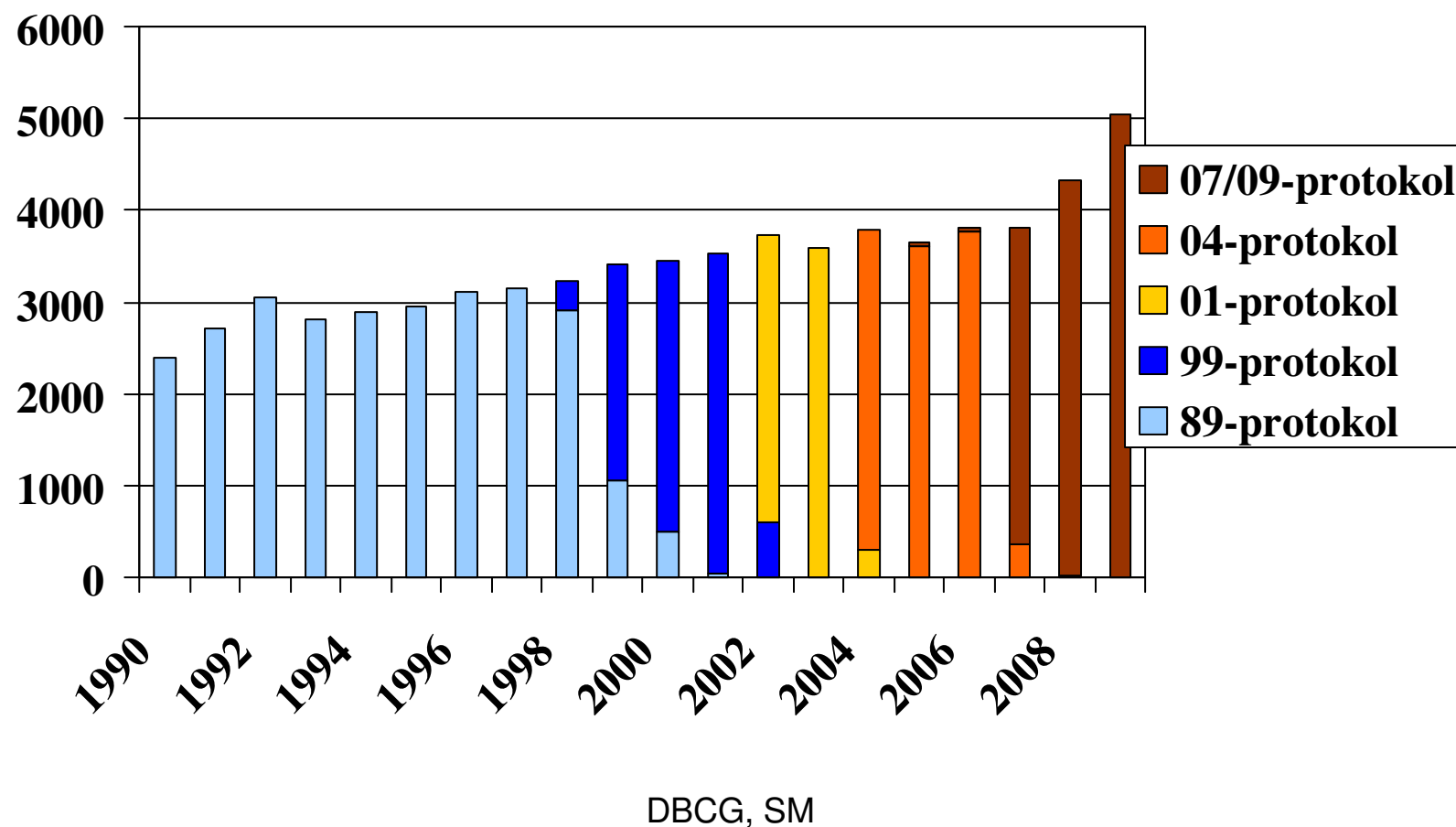


Repræsentantskabs møde

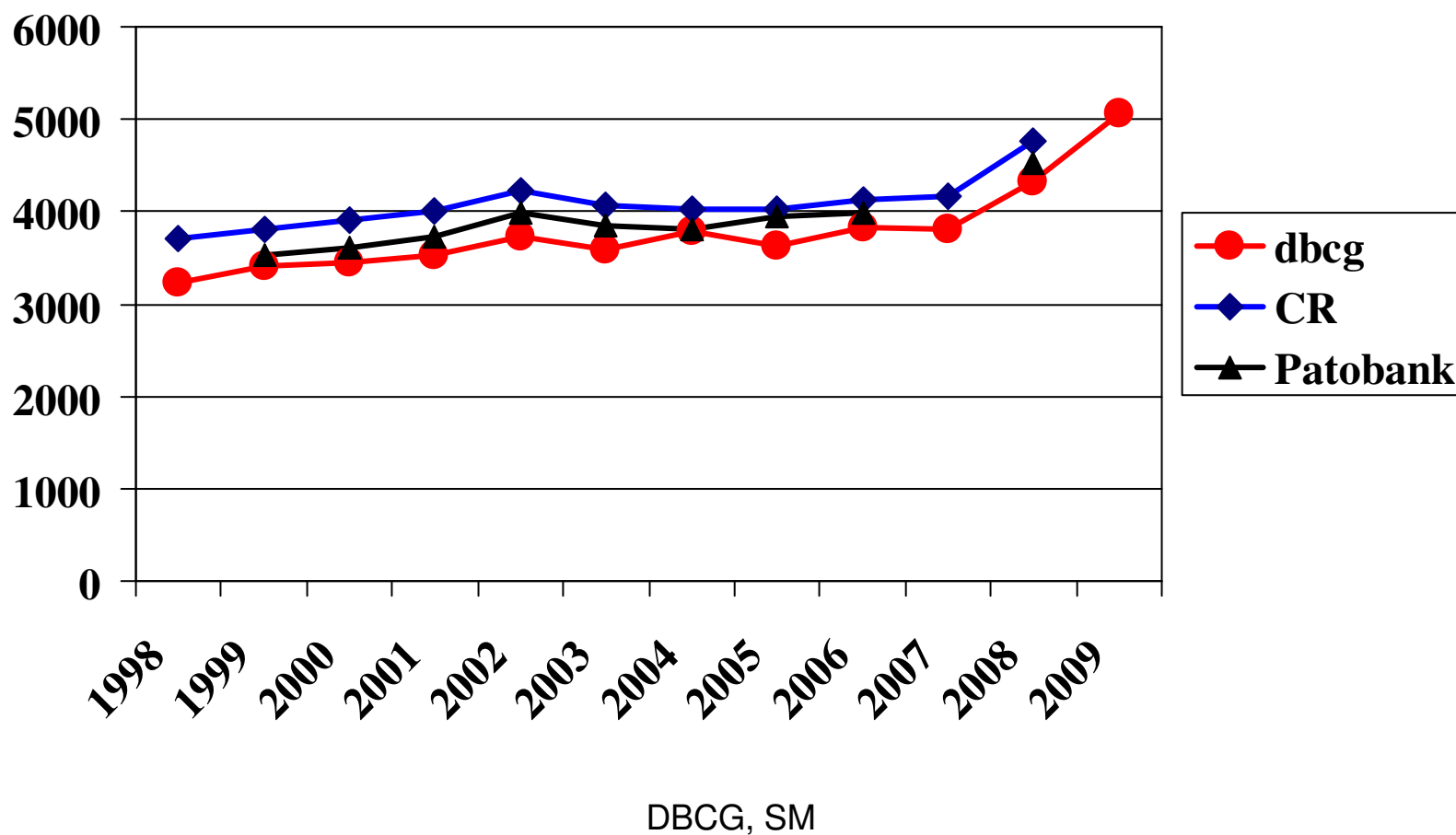
25-1-2010

Susanne Møller
DBCG

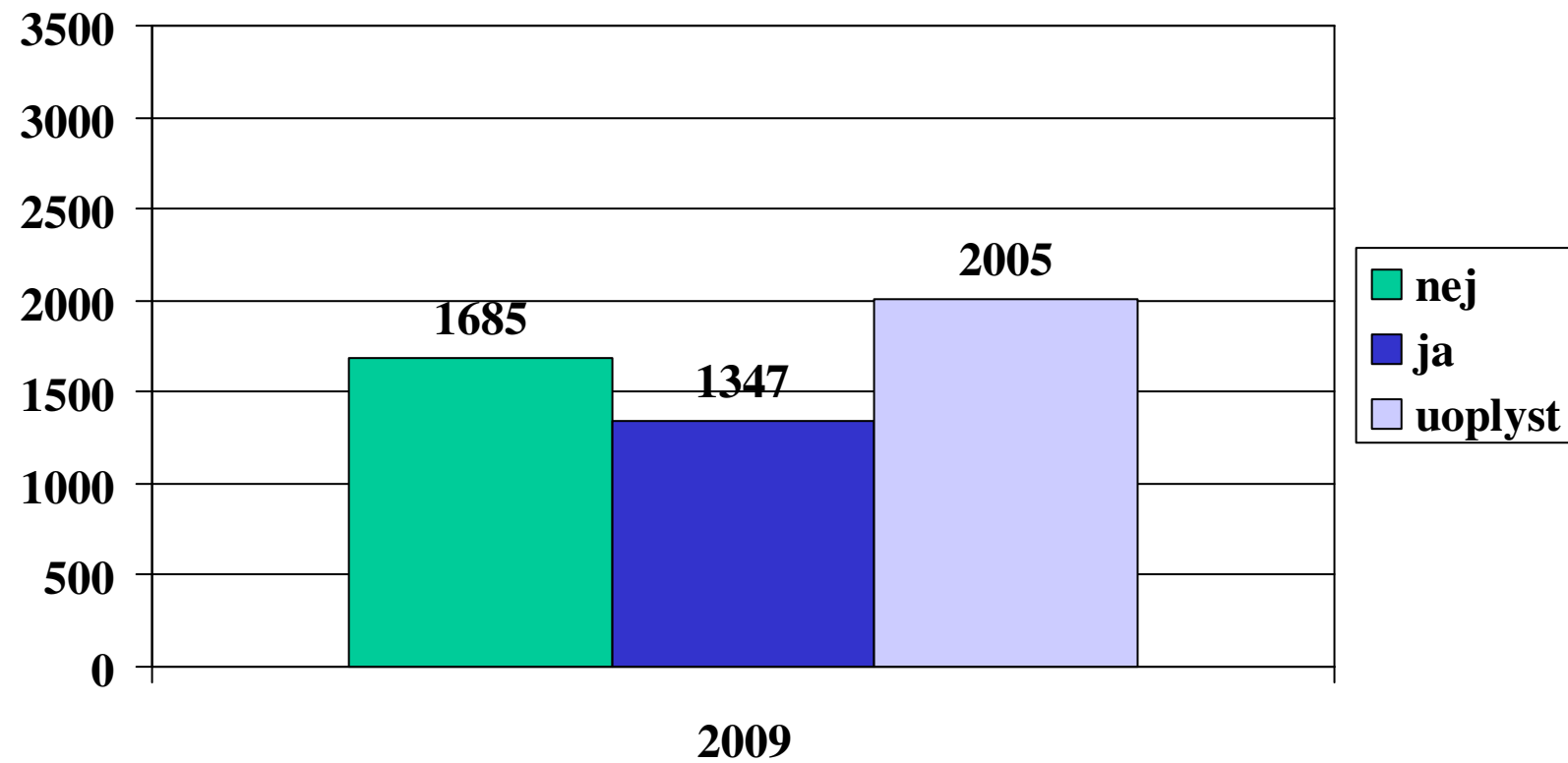
Antal i DBCG 89/99/01/04/07/09 pr år (n=68.478)



Antal registreringer af pt. med primær invasiv cancer i DBCG vs CR vs Patobank

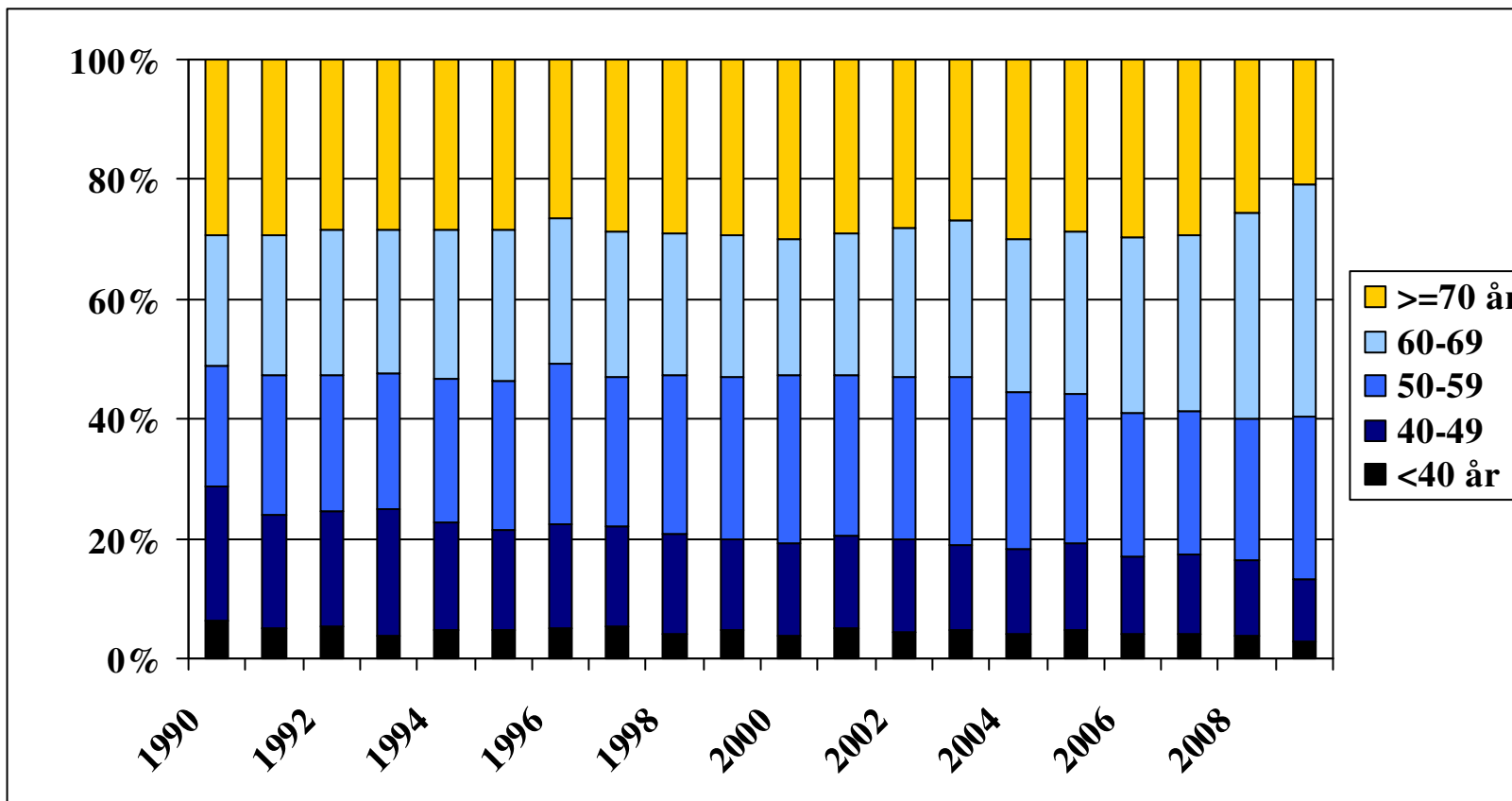


Fundet ved populationsscreening



DBCG, SM

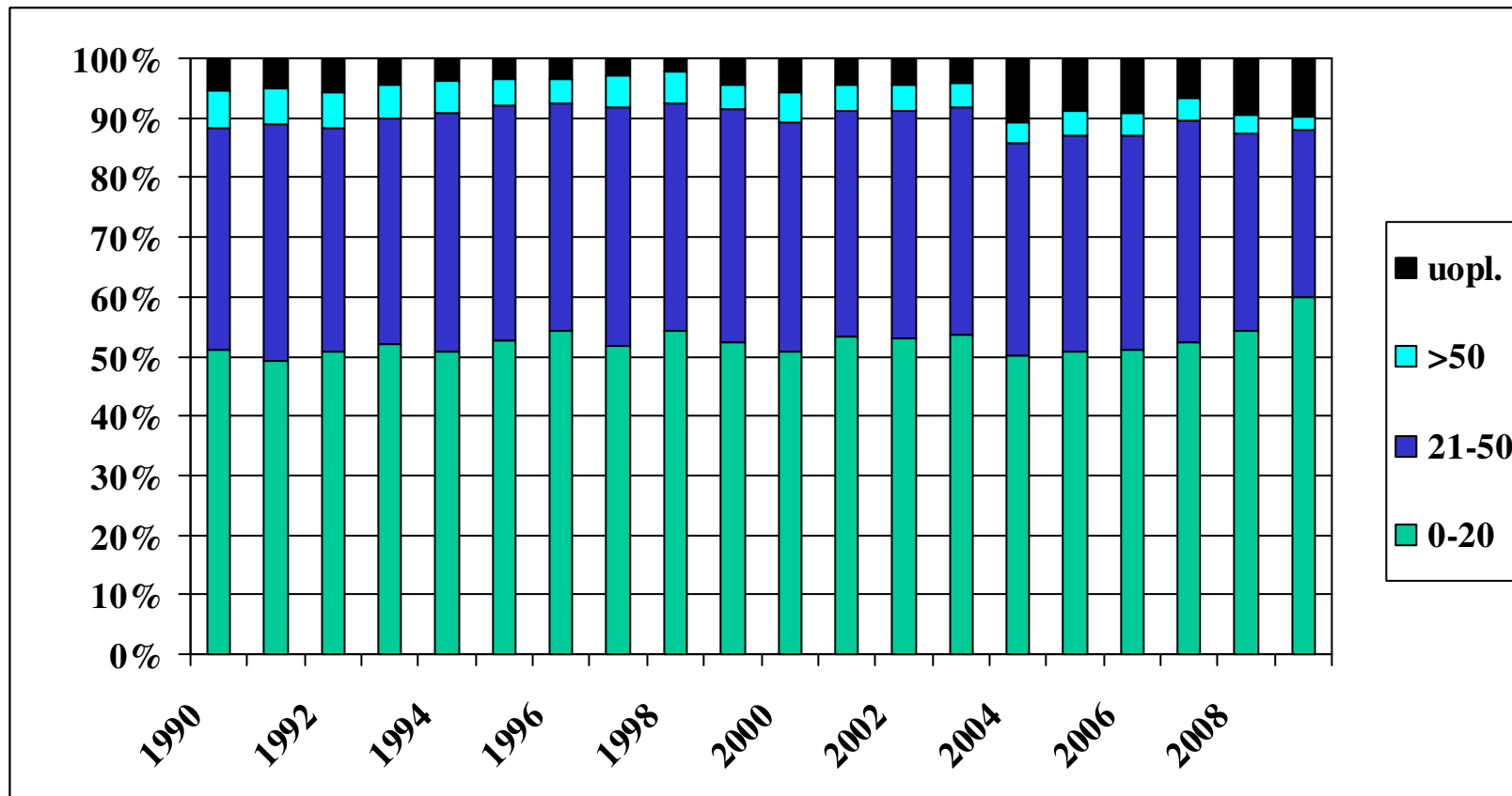
Fordeling af alder pr år



DBC, SM

Fordeling af tumorstørrelse pr år

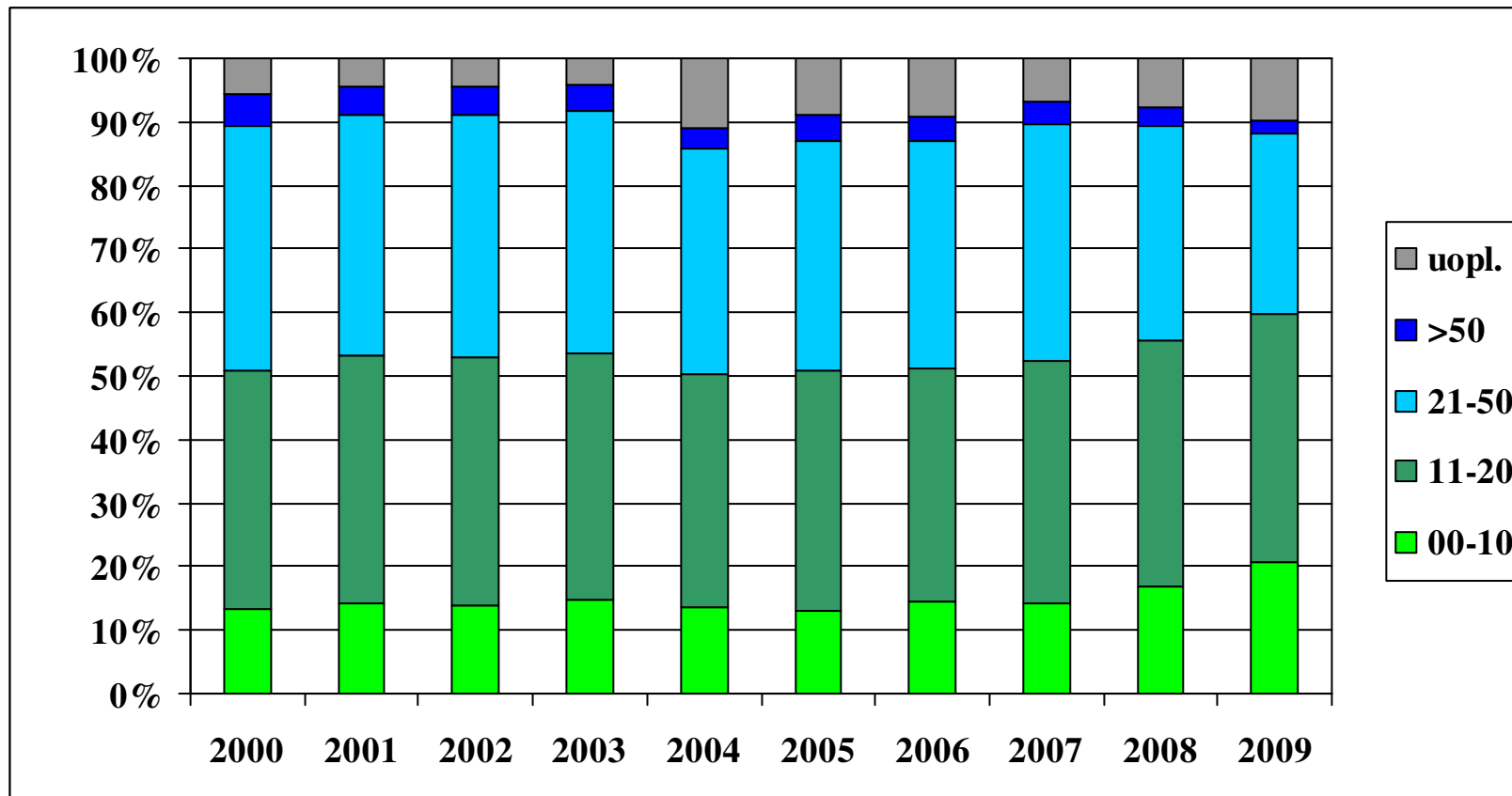
(største diameter i mm)



DBCg, SM

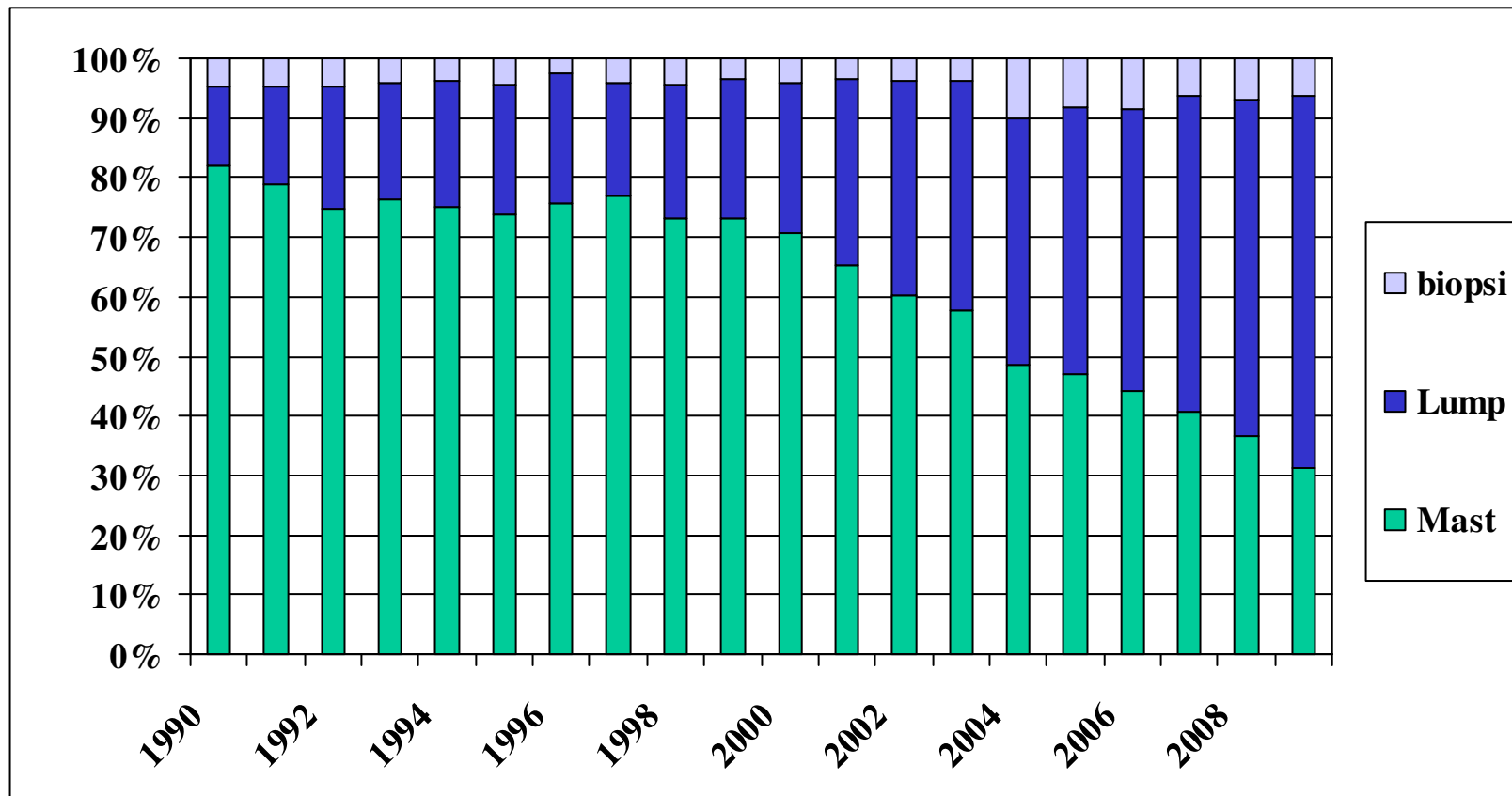
Fordeling af tumorstørrelse pr år

(største diameter i mm- ny inddeling)



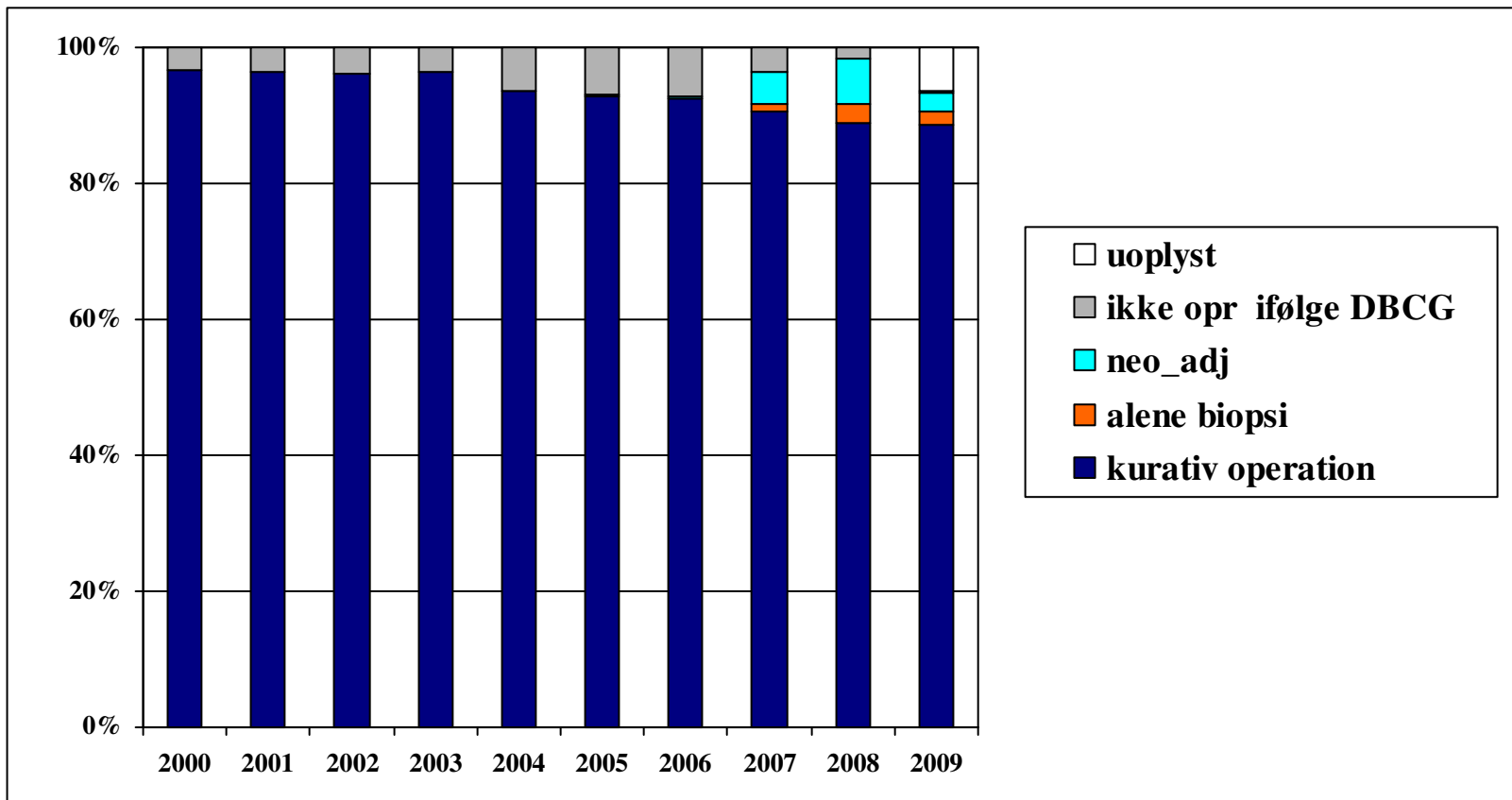
DBCg, SM

Fordeling af operationstype pr år



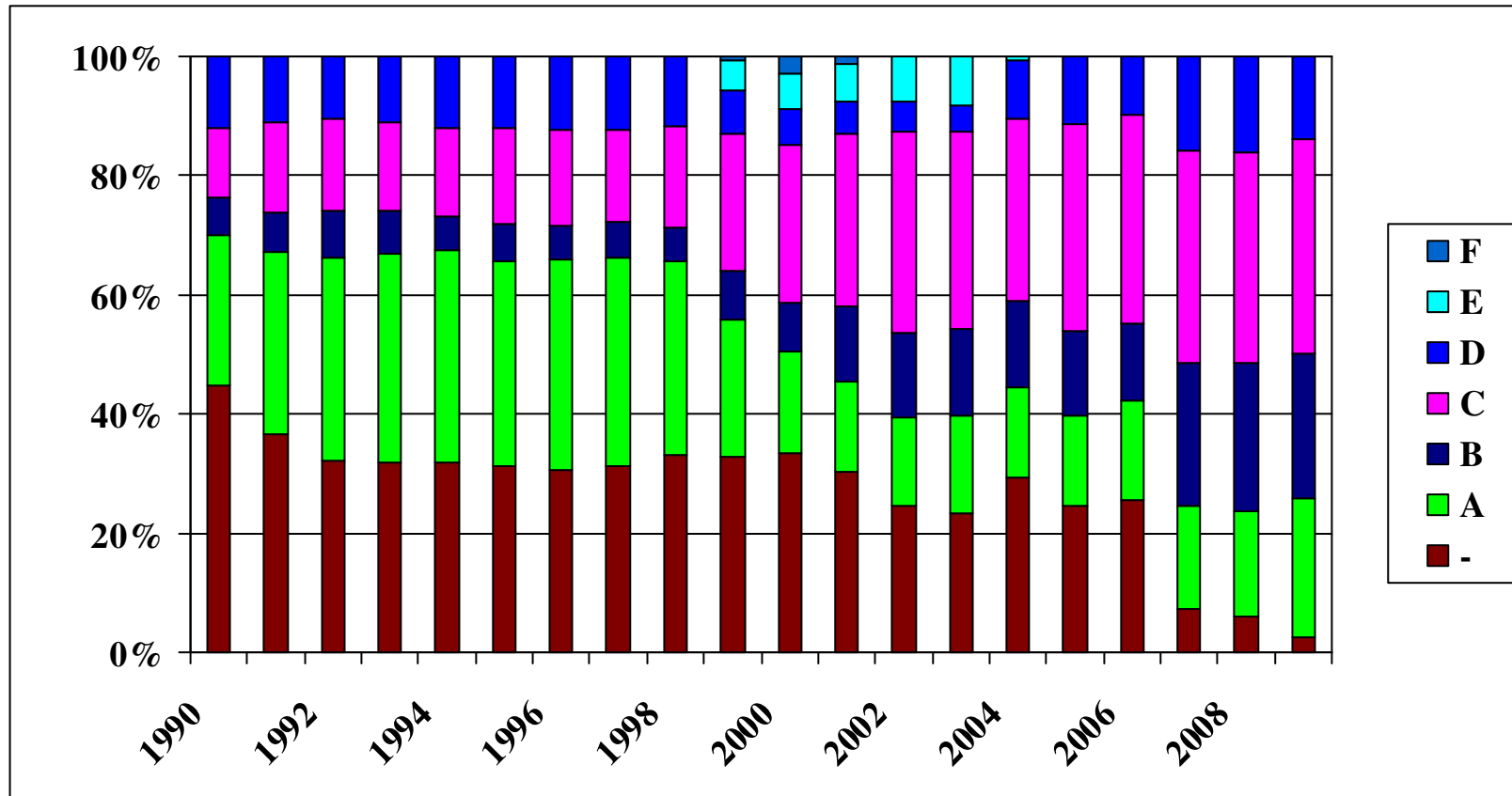
DBCg, SM

Fordeling af præoperativ klassifikation



DBCG, SM

Fordeling på protokol pr år



DBC, SM

Fordeling på protokoller i 2009

| Protokol | Kriterier | Medicinsk efterbeh. | Antal (n=5037) |
|-----------------|--------------------------------------------------------------------------------------------------------------------------|---------------------|----------------|
| Ikke i protokol | | | 31 (1.%) |
| A | Lavrisiko: >35 år N-, tumor<=2 cm (duktal, I or lobulær I-II or Anden diag) R+/? , HER2 -/? , Top2A normal/? | Ingen | 975 (20%) |
| B,t | <60 år, R+/R?, HER2 + | KT, ET, T | 167 (3.3%) |
| B | <60 år, R+/R?, HER2 -/? | KT,ET | 916 (18%) |
| C | >=60 år, R+/R? | ET | 1599 (32%) |
| D,t | R-, HER2 + | KT, T | 211 (4.2%) |
| D | R-, HER2 -/? | KT | 418 (8.3%) |
| Ikke bestemt | | | 720 (15%) |

DBCG, SM

Årsager til ikke protokol i 2009 ,

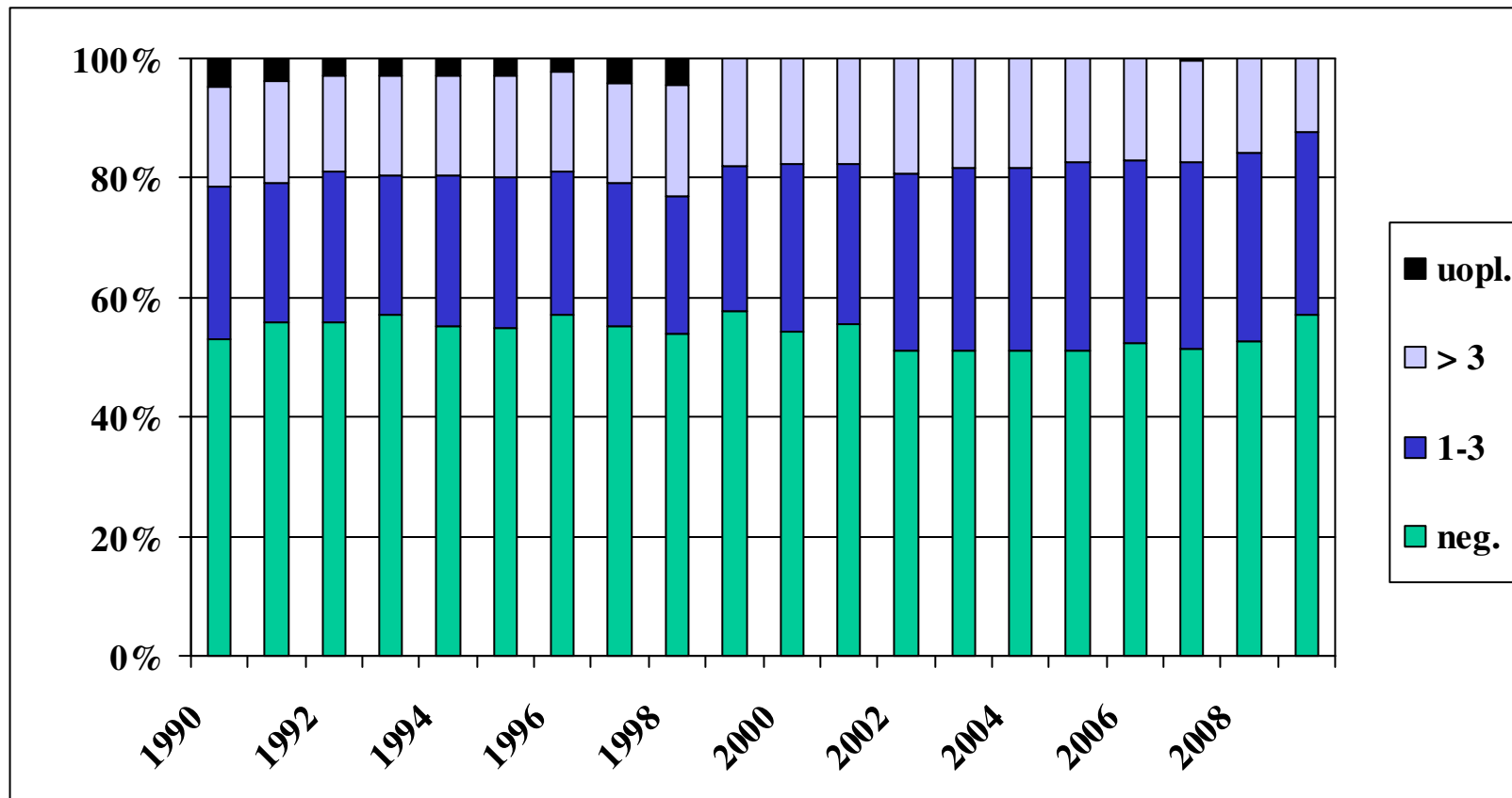
(n =31+ 720, færre udfyldte efter on-line)

| Årsag | Antal 2009 (2008) | Andel af xxx pt. |
|------------------------------------------|----------------------|------------------|
| Fjernmetastaser | 50 (59) | |
| Tidl.malign | 91 (77) | |
| Sarkom/phylloides | 3 (4) | |
| Bilateral | 97 (103) | |
| Kontraindikation (f.eks. Alder) | 61 (109) | |
| Teknisk inoperabel | 40 (79) | |
| Ikke opereret ifølge dbcg | 157 (303) | |
| Andet | 69 (142) | |
| <i>Død <4 uger efter operation</i> | | |
| <i>Fejlbehandlet / fejlklassificeret</i> | | |
| <i>fravalg</i> | | |
| DBCG, SM | | |

Randomiserede protokoller i 2009

| Protokol | Regime | 2007-2008 antal | 2009 (+2010) antal |
|--------------------------------------|----------------------------------------------------------------------------------------|--------------------|--------------------------|
| READ start juli 08 | 1 EC → Docetaxel 2 Docetaxel+ Cyklofosfamid | 77 | 459 |
| ALTTO start nov 07 | 1 Trastuzumab 2 Lapatinib 3 Trastuzumab → Lapatinib 4 Trastuzumab + Lapatinib | 150 | 10 |
| REAL start juli 09 | Operation -> letrozol Neo_adj 4 uger -> operation | | 18 |
| RT 09 Stråle beh Start sept 09 | | | 152 |
| SOLE Start nov 09 | Fortsat letrozole efter 5 år Continuert vs intermitterende | | 18 |

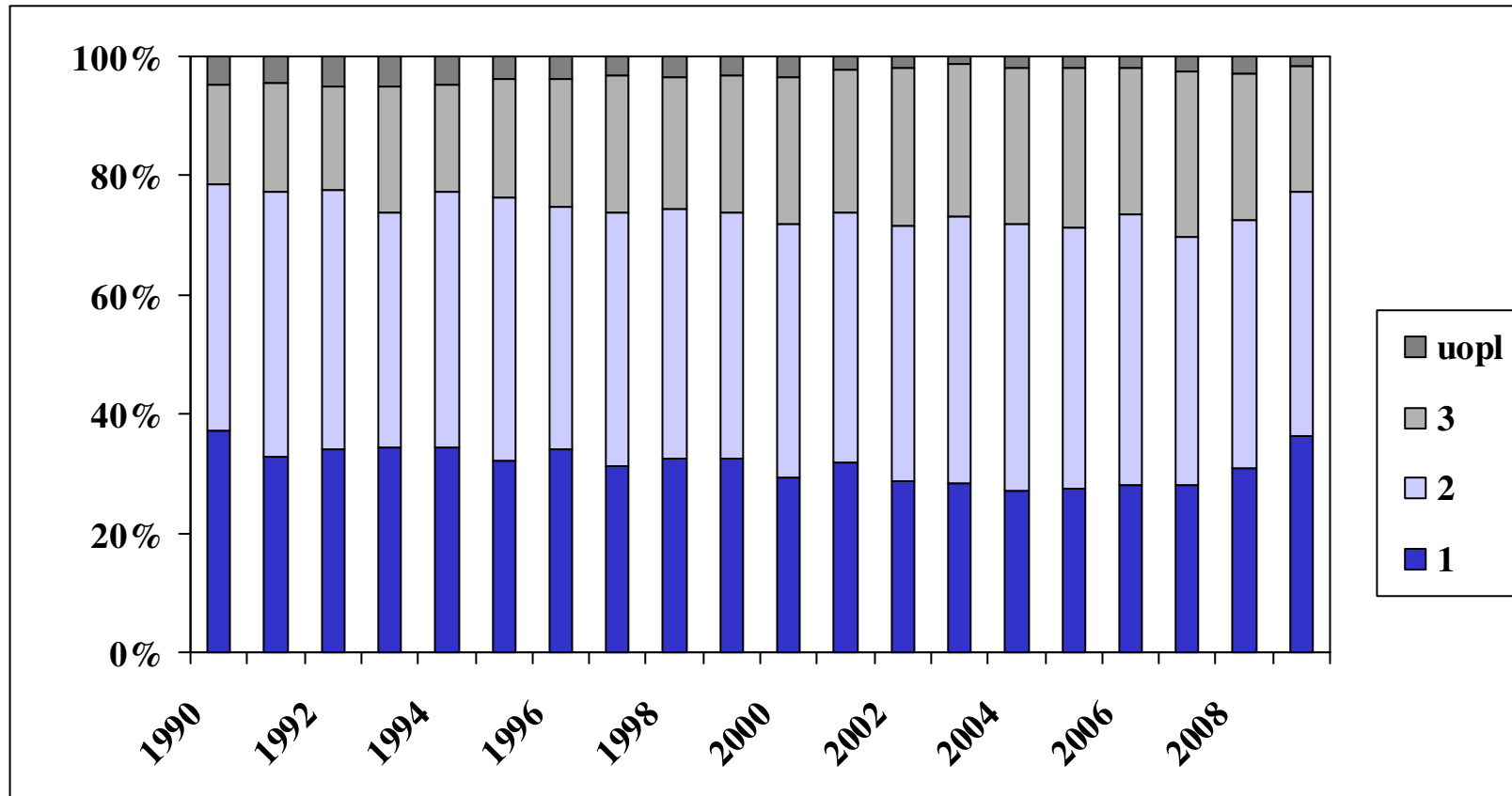
Antal positive lymfeknuder pr år



DBCG, SM

Malignitetsgrad 1-3 pr år

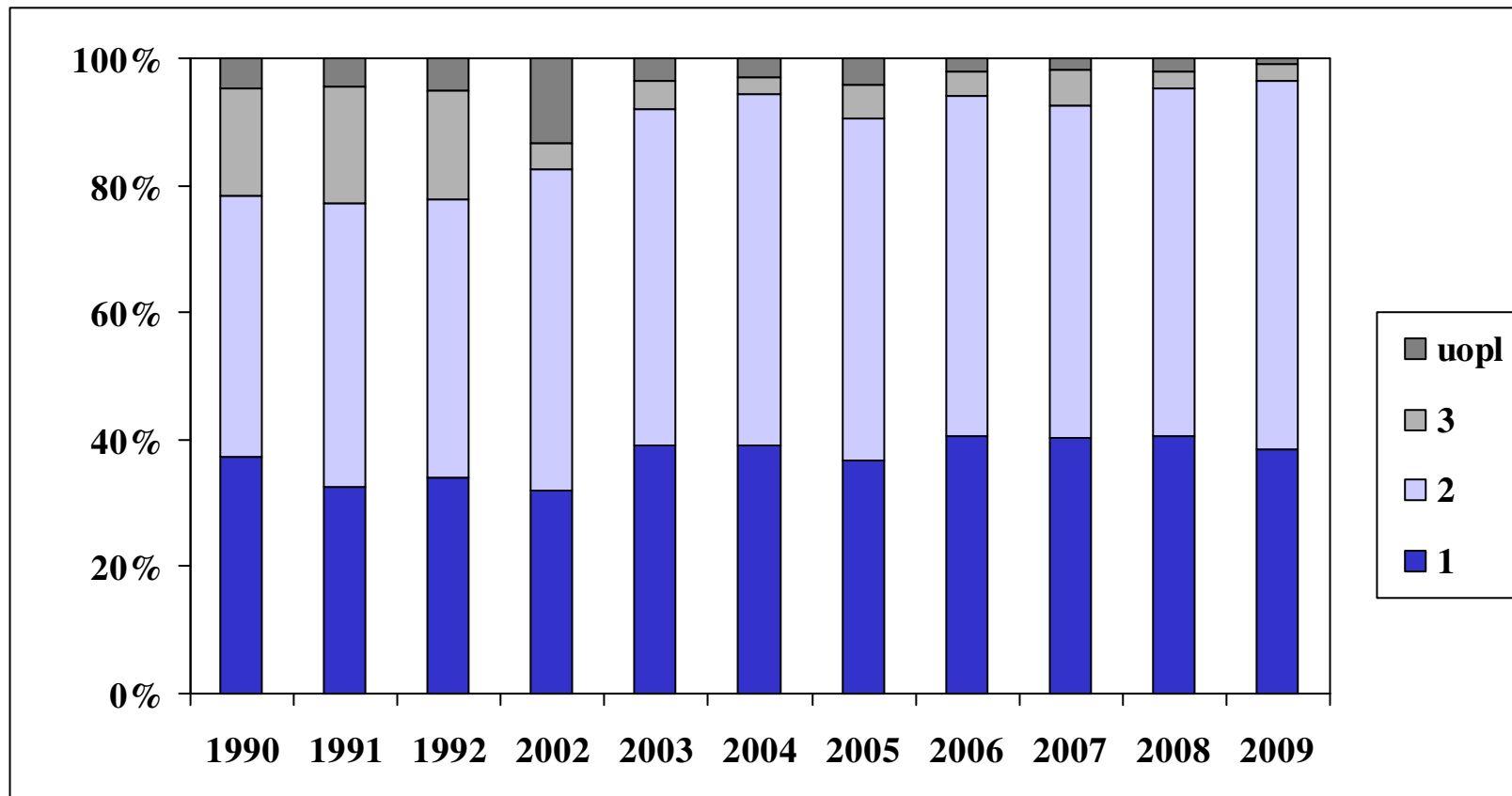
(ductal tumor n=38.715)



DBCG, SM

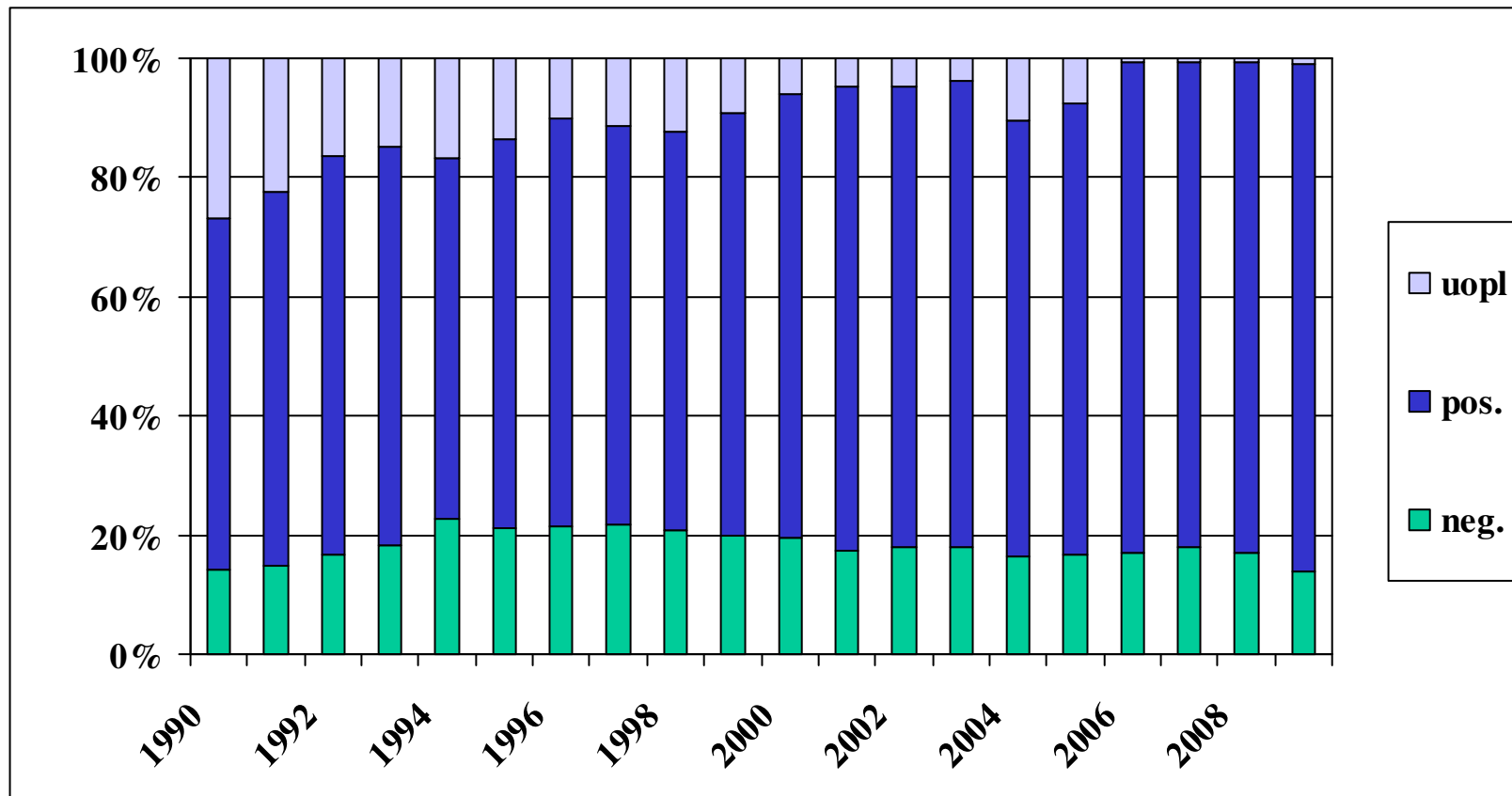
Malignitetsgrad 1-3 pr år

(lobulær tumor n=2990 (ca 350 pr år))



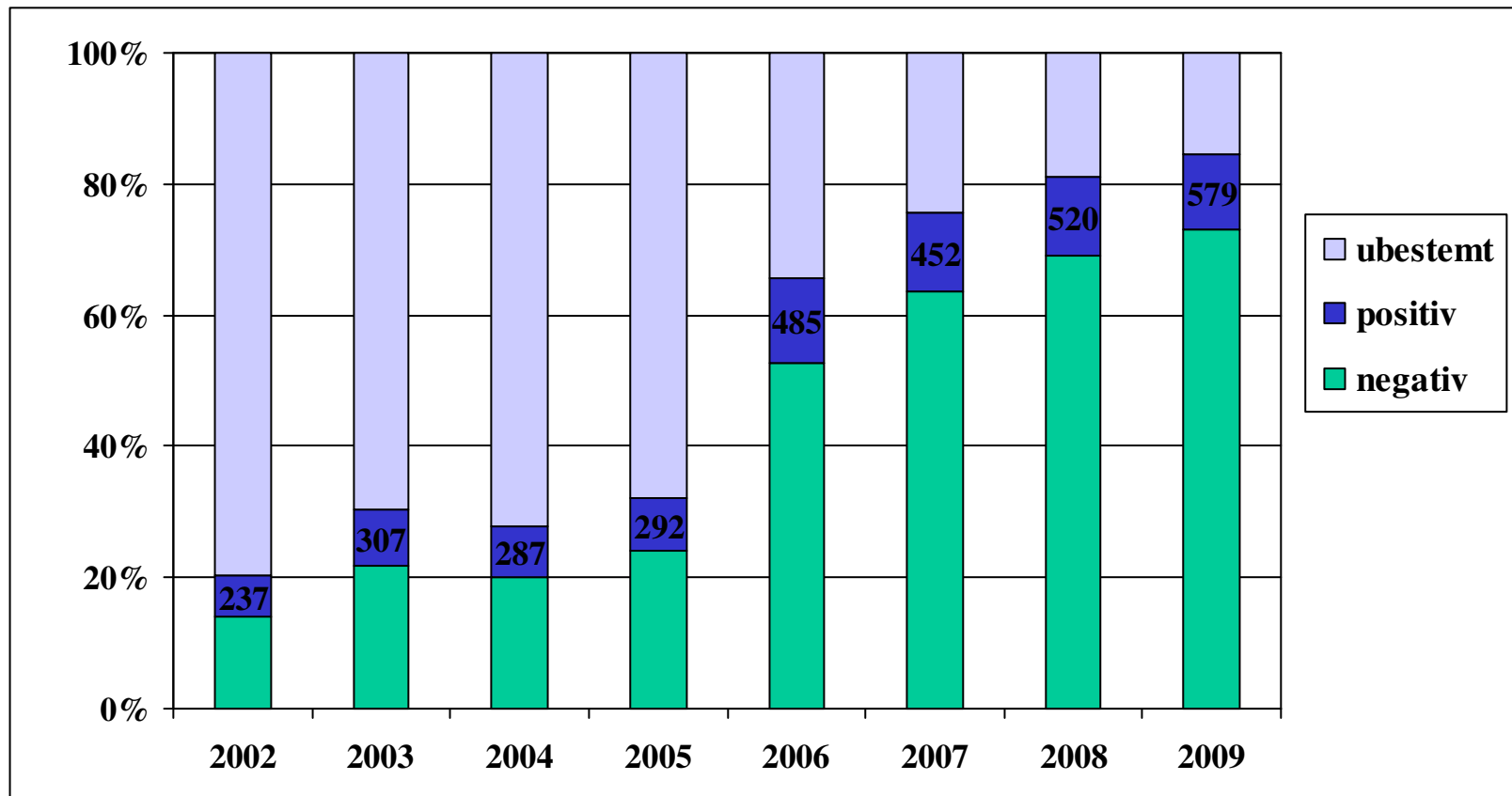
DBCG, SM

Receptorstatus pr år



DBCG, SM

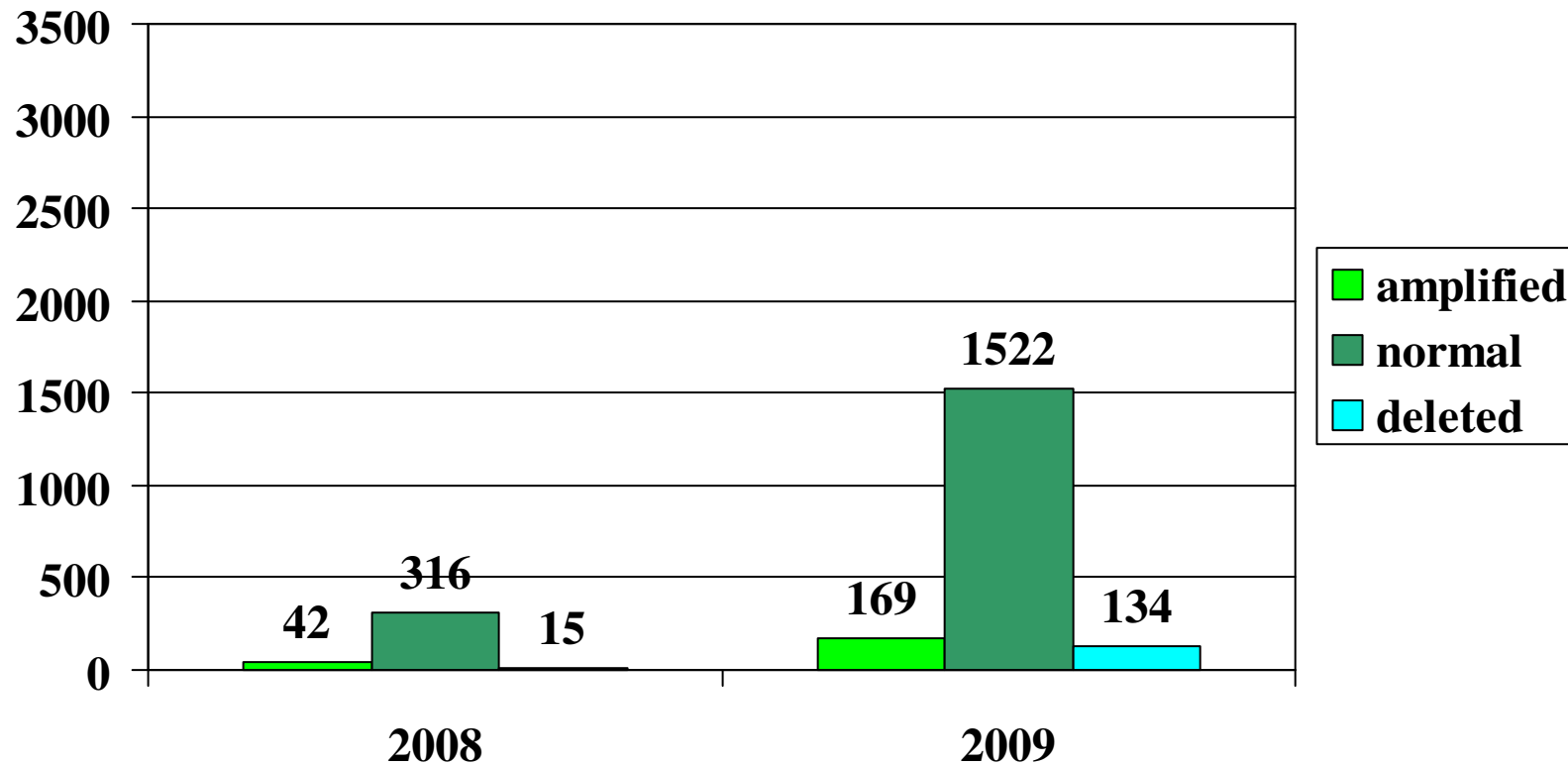
HER2 status pr år (2002-2008)



DBCG, SM

TOP2A bestemmelser

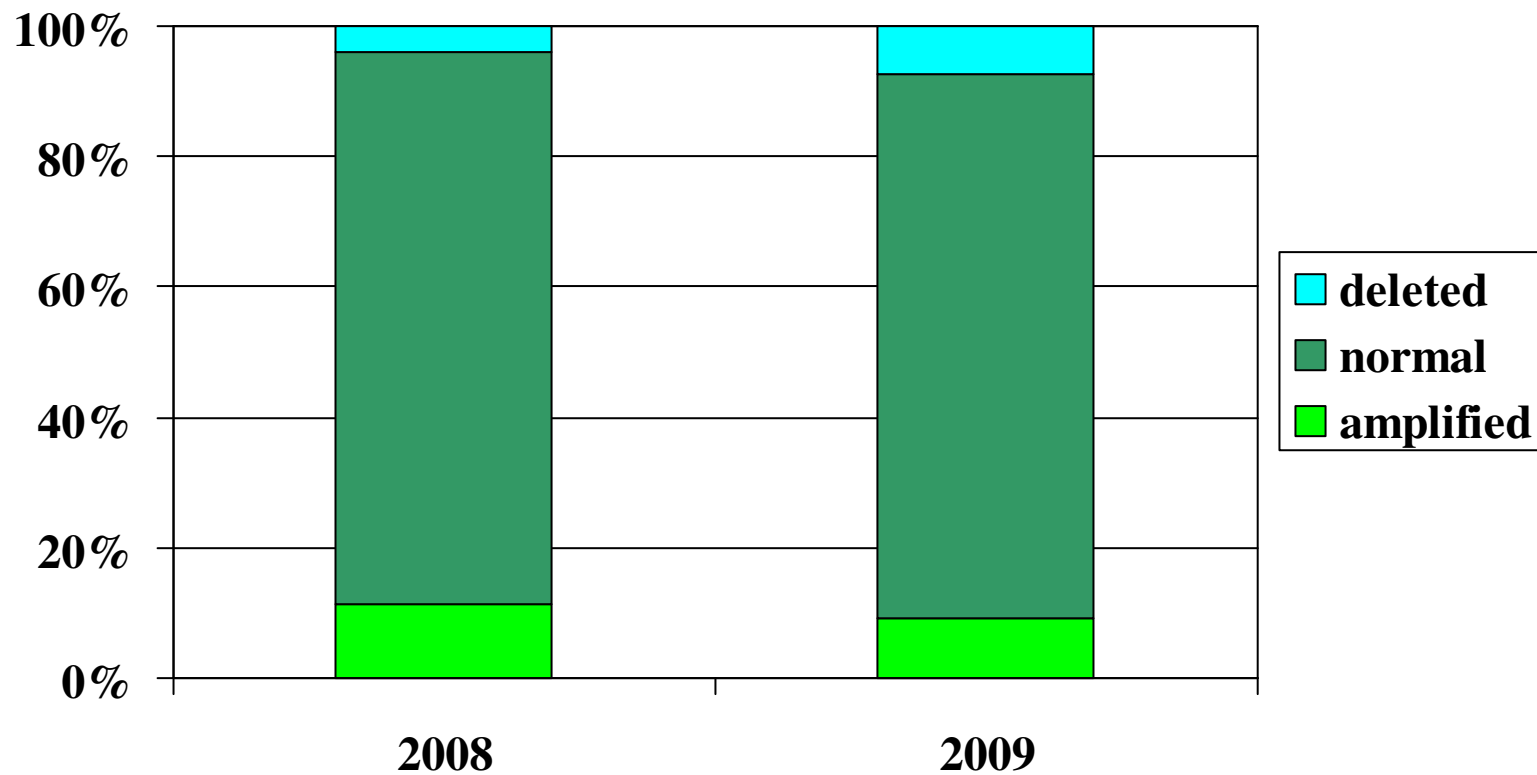
2008 (n=375) og 2009 (n=1825)



DBCG, SM

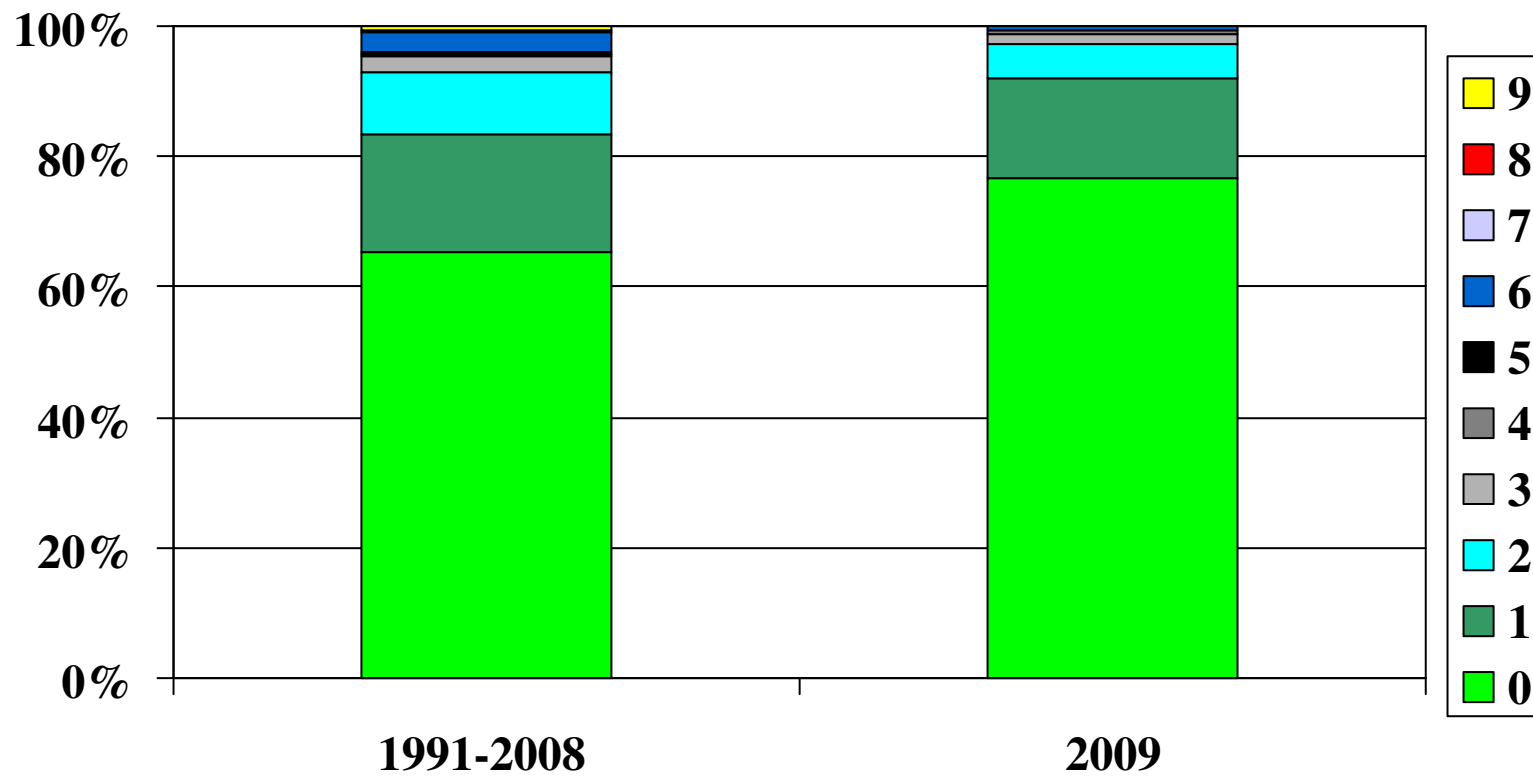
TOP2A bestemmelser

2008 (n=375) og 2009 (n=1825)



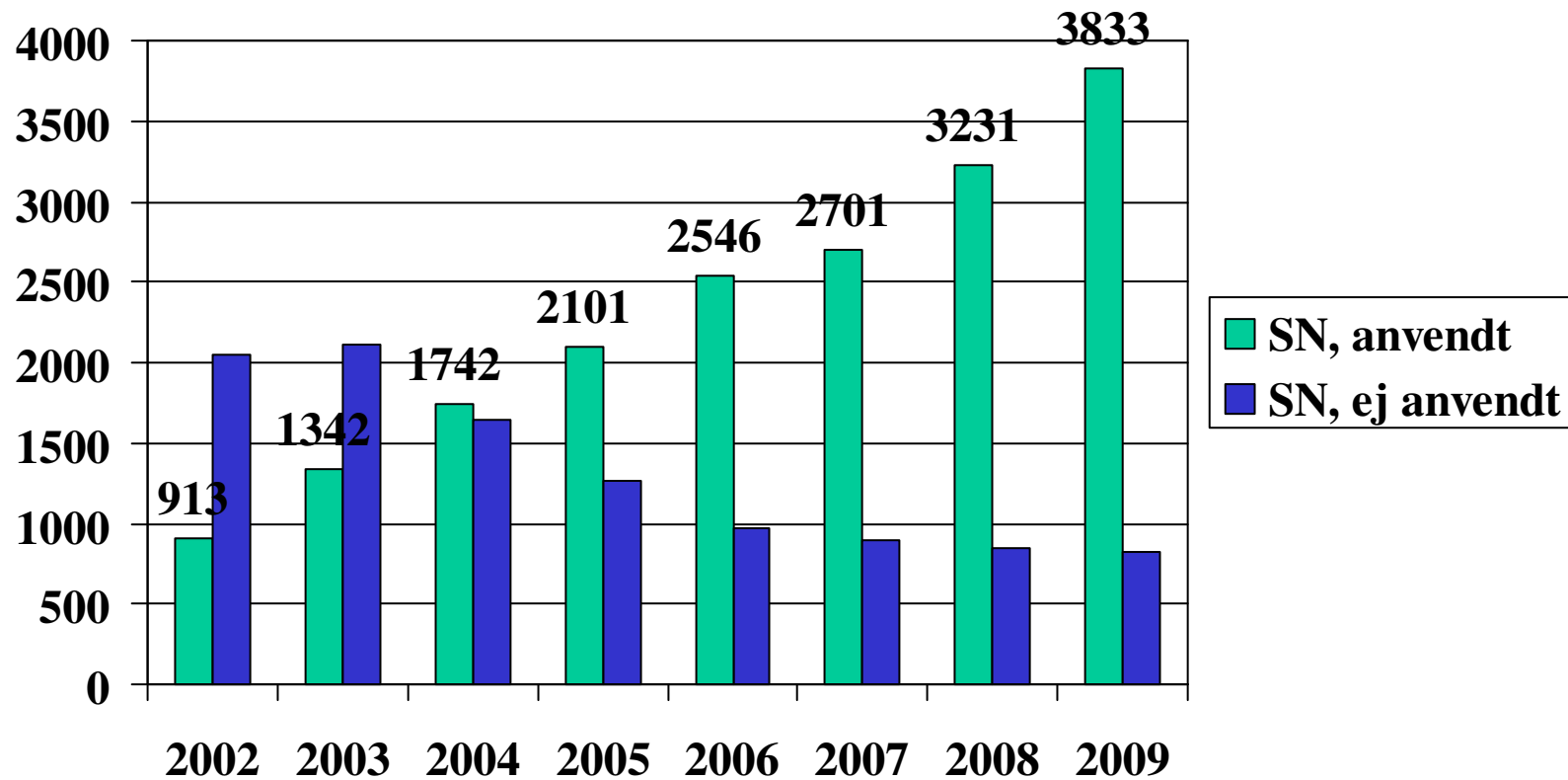
Comorbidity

(1991-2008 : n=300 , 2009 : n=3609)



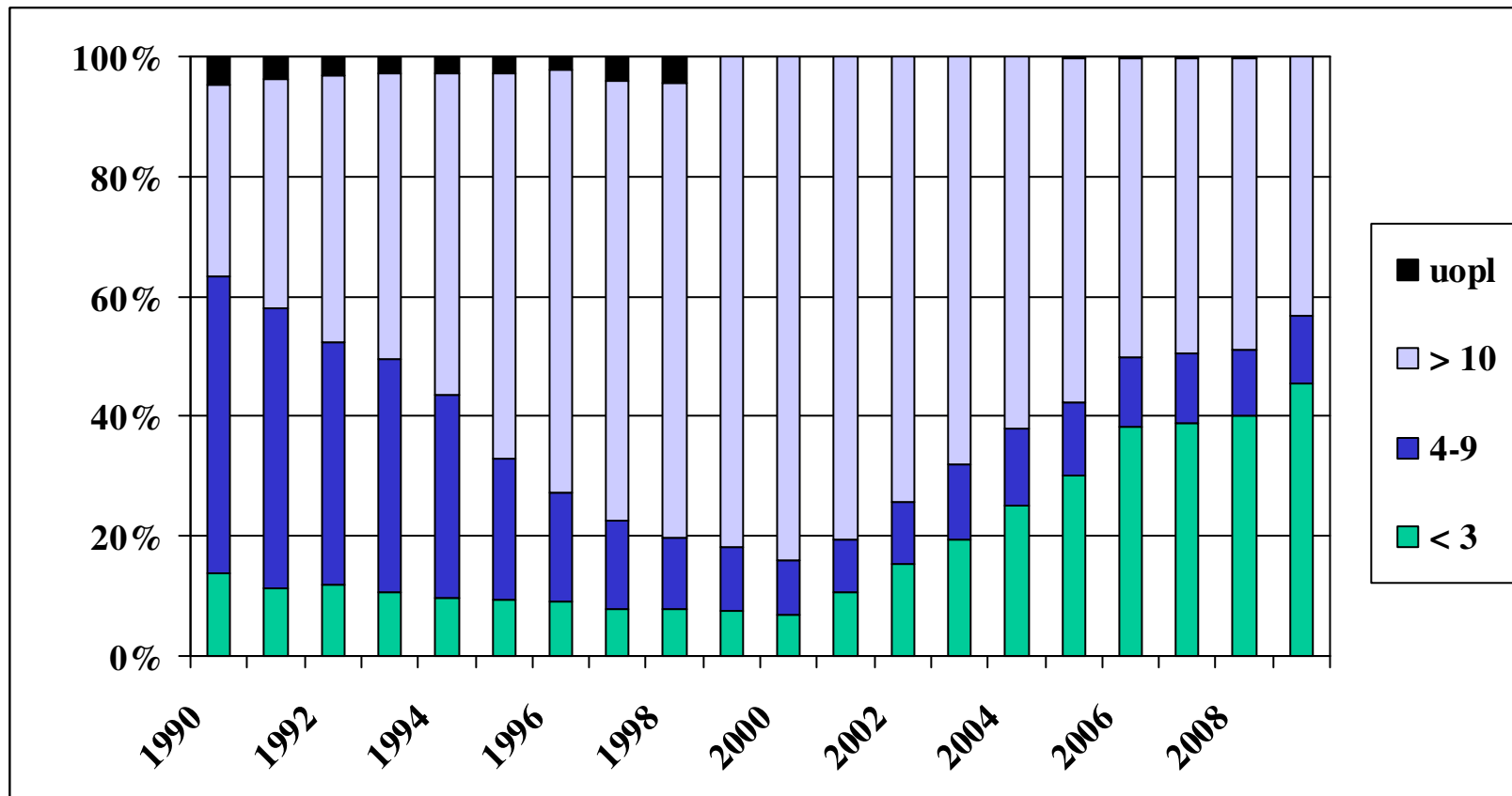
DBCg, SM

Sentinel Node pr år (Node -/+) efter 2002



DBCg, SM

Antal påviste lymfeknuder pr år

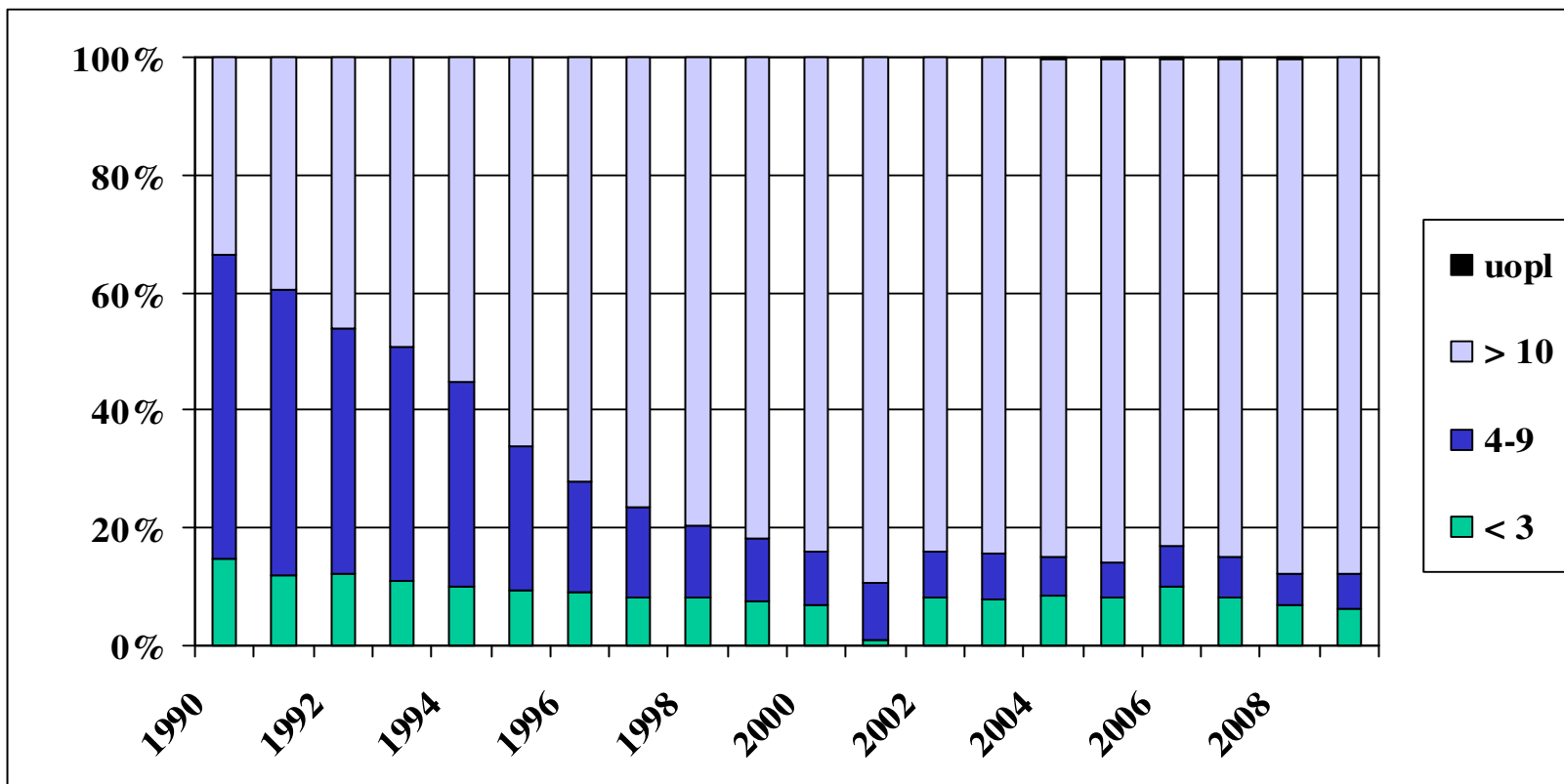


DBCg, SM

Antal påviste lymfeknuder pr år

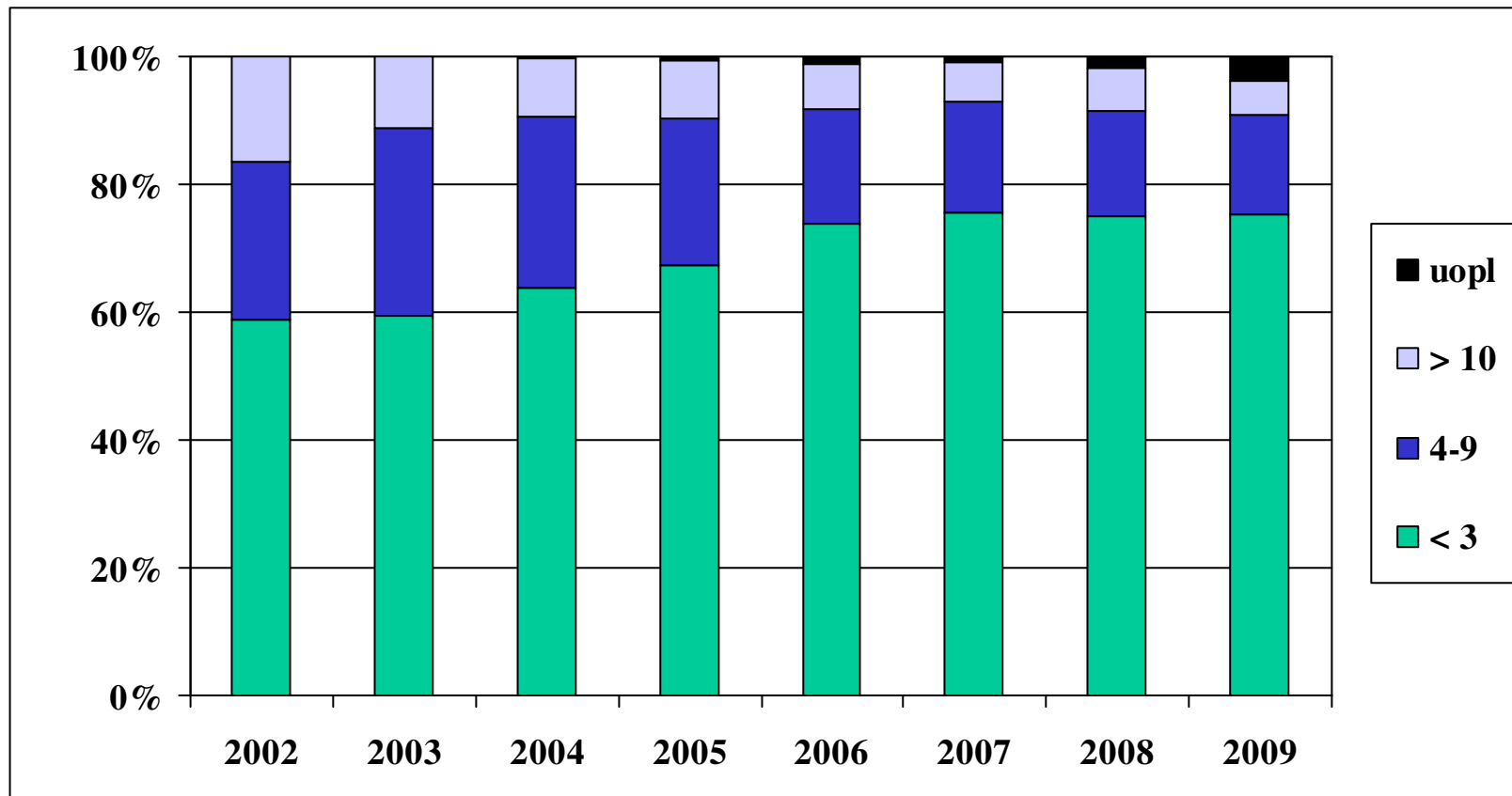
Ikke Sentinel Node

(-SN eller +SN,N-pos)



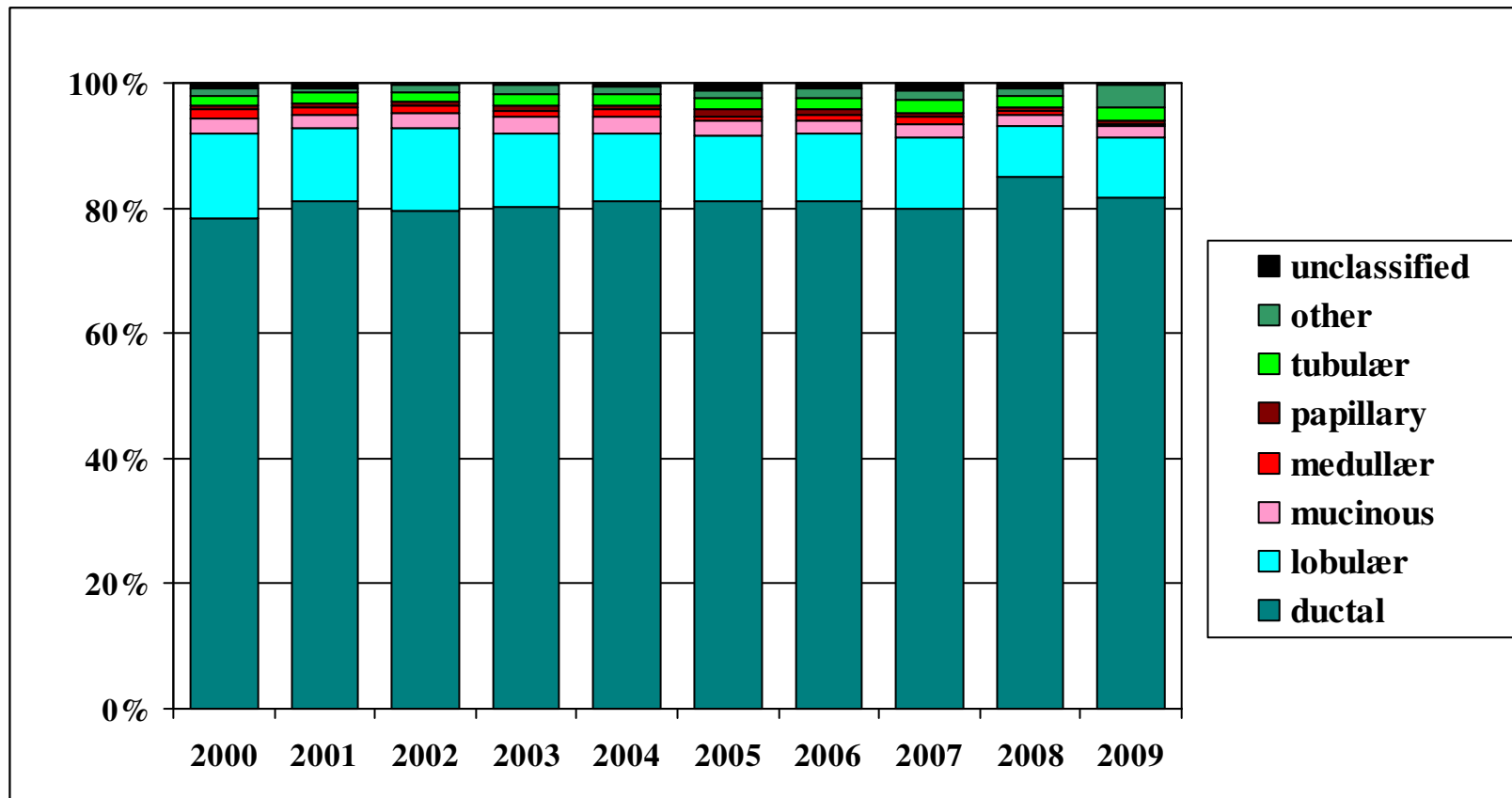
DBCg, SM

Antal påviste lymfeknuder pr år med Sentinel Node (SN, N-neg)



DBCg, SM

Fordeling af diagnosetype pr år



DBCg, SM